



©ignify  
Dynalite

Dynalite  
Product Portfolio  
Networked Solutions

# Signify Dynalite

## the intelligent choice

When you choose Dynalite, you are selecting the world's finest lighting control system. Tried and tested in more than 40,000 projects, Dynalite has implemented some of the largest and most extensive control networks around the globe. The same robust technology can be applied to any application, at any scale.

Dynalite is part of the Signify Professional Systems group. This global group includes several other world leaders in LED lighting and advanced lighting controls including Color Kinetics, Cooper Lighting Solutions, and Signify Interact.

Combined, these groups offer years of market knowledge and experience in developing best-in-class lighting solutions and controls. Signify builds on our extraordinary strengths and depth of expertise to bring the best-in-the-industry connected lighting systems to our valued customers and partners.

Our experience and expertise are unrivaled and our reputation is based on delivering successful outcomes for difficult and challenging projects. So, it is not really a matter of "Why use Dynalite?" but "Why use anything else?"

This Product Portfolio provides a general overview of the Dynalite range of Indoor Networked Controls products and solutions.

Further detailed information can be found on the product specification sheets and installation instructions, available for download at: [dynalite.com](http://dynalite.com)



# Contents

## Products

### Controllers

#### Relay Controllers

DDRC-GRMS-E	Multi-Protocol Switching Room Controller	7
DDRC420FR	Relay Controller	7
DDRC810DT-GL	Relay Controller	8
DDRC1220FR-GL	Relay Controller	8
DMRC210	Relay Controller	9

#### DALI Controllers

DDBC120-DALI	DALI-2 Driver Controller	9
DDBC320-DALI	DALI-2 Driver Controller	10
DDBC516FR	Signal Dimmer Controller	10
DDBC1200	Signal Dimmer Controller	11
DBC905W	Signal Dimmer Controller	11
DMBC110	Signal Dimmer Controller	12
DDC116-UL	Signal Dimmer Controller	12

#### Multipurpose Controllers

DDMC802	Multipurpose Modular Controller	13
DMC2	Multipurpose Modular Controller	13
DMC4	Multipurpose Modular Controller	14
DDLEDC605GL	PWM Controller	14
DMC Modules	Controller Modules	15

#### HVAC Controllers

DDFCUC	HVAC Controller	16
--------	-----------------	----

### Gateways

#### Network Gateways

PDDEG-S	Ethernet Gateway - Supervisor	18
PDEG	Ethernet Gateway	18
PDEB	Ethernet Bridge	19
DDNG485	RS-485 Gateway	19
PDZG-E	Zigbee Gateway	20

#### Integration Devices

DDNG232	RS-232 Gateway	20
DDNG-KNX	KNX Gateway	21
DLLI8180	Dry Contact Interface	21
DLLI5i-DALI	DALI Dry Contact Interface	22
DDMIDC8	Low Level Input Integrator	22

### User Interfaces

#### Antumbra

PAXBPA	Antumbra Button US/ANZ	24
PAXBPE	Antumbra Button EU	24
DADPA	Antumbra Display US/ANZ	25
DADPE	Antumbra Display EU	25
PAXBLE	Antumbra Button Lite EU	26

#### Revolution

PDRDE	Revolution Display EU	26
PDRxA	Revolution Button US/ANZ	27
PDRxE	Revolution Button EU	27
PDRxxxE	Revolution Multigang Frames EU	28

#### Glass Touch

PATPA	Glass Touch US/ANZ	29
PATPE	Glass Touch EU	29

#### DirectSet

DSxA	DirectSet User Interface range US/ANZ	30
------	---------------------------------------	----

#### Touchscreen

PDTS	Networked Touchscreen	31
------	-----------------------	----

#### Communication

DACM-DyNet	DyNet Communication Module	31
------------	----------------------------	----

### Sensors

#### DyNet Sensors

DUS360CR	Multifunction Sensor	33
DUS360CR-DA	Multifunction Sensor	33
DUS360CS	Multifunction Sensor	34
DUS804CS-UP	Multifunction Ultrasonic Sensor	34
DUS30CS	Multifunction Directional Sensor	35
DUS90CS	Multifunction Directional Sensor	35

#### DALI Sensors

DNS360LB-CR-PIR-DALI	Multifunction Sensor	36
DNS360LB-CS-PIR-DALI	Multifunction Sensor	36
DUS30LHB-D	Multifunction Directional Sensor	37
DUS90WHB-D	Multifunction Directional Sensor	37
DUS90AHB-D	Multifunction Directional Sensor	38

### System Kits

#### General

Single System Architecture	Installer configured system (American)	40
ULC1 & ULC2	Preassembled DIN Rail Cabinets (UL)	41

#### Hospitality

Guestroom Kit	Preconfigured for midscale hotels	42
Guestroom Kit Lite	Preconfigured for economy hotels	43

#### Retail

Store Kit Mini	Preconfigured for small retail stores	44
Store Kit	DALI Mini Training Case	44
Store Flex	Tailored for large food and retail stores	45

#### Demonstration

PD-KoD	DALI Demo Case	46
PD-KoD-TC	PD-KoD-TC	46
UI Demo Box	Easy to carry box of eight UIs	47
UI Demo Board	A-frame with complete UI range	47

### Accessories

#### Network Accessories

DDNP1501	Network Power Supply	49
DDTC001	Timeclock	49

#### Connectivity Accessories

PD-PCN	USB PC Node	50
PD-232N	RS-232 PC Node	50
DINGUS	Serial Port Connectors	51
DyNet-STP-CABLE-LSZH	Cat 5e Cable	51
DyNet-SFLAT6-CABLE	Flat Cable	51

#### Mounting Accessories

PAEFE	Antumbra Electrical Frames	52
DH2X24	DIN Rail Enclosure	52

## Software

### Software

#### Pro Workflow

Dynalite System Builder	54
Dynalite System Manager	54
Multiroom System Manager	55
PDTS UI Creator	55

#### Mobile Apps

Dynalite Switch App	56
Dynalite EnvisionTouch	56

#### Dynalite Cloud

Dynalite Cloud	58
----------------	----

## Relay Controllers

### DDRC-GRMS-E Multi-Protocol Switching Room Controller

#### Fully networked relay control solution

The Dyalite DDRC-GRMS-E controller is a compact, versatile room automation and energy management solution with bridging functionality between the Ethernet LAN and connected DyNet devices. Bespoke pre-configuration allows deployment without the need for commissioning software. Incorporating switching relays and DMX for dimming and color control, every aspect of this device has been designed to be feature-rich and cost-effective.

**Single box solution** – Compact design allows for small installation footprint and reduced cabling for a simpler and faster installation.

**Inbuilt Ethernet port** – Directly connecting to a site's Ethernet LAN, the device can securely report its status and pass network messages.

**Pre-programmed** – Can be preloaded with a bespoke configuration to immediately meet the project's needs from the moment it powers up.

**Powerful processor** – The internal processor allows the device to perform advanced scripted functions and provide automated intelligent responses to multiple inputs.

**Mixture of switching relays** – Supports a combination of different relay ratings and types for a perfect blend of performance and cost-effectiveness.

**18 dry contact inputs** – Allows simple integration with third-party devices and systems.

**32 channel DMX output** – Adds color and dimming control for a touch of theatrics.

**UL924 Input** – Integrates seamlessly with compatible emergency systems.

**Four digital outputs** – Designed to drive room status indicator LEDs in common cathode configuration, and trigger additional devices such as doorbells.



**DyNet output** – Directly support the requirements of DyNet devices without the need for an additional network power supply.

**Unique LAN addressing** – DIP switches allow the installer to manually set the device's network identification.

**Dimensions:**  
105 x 216 x 74 mm (4.13 x 3.74 x 2.91 in)

**12NC – Ordering Code:**  
913703334009

### DDRC420FR Relay Controller

#### Robust control of switched loads

The Dyalite DDRC420FR provides control of any type of switched load, including difficult lighting loads. This four-channel device supports all types of switched loads up to 20 A inductive.

**Feed-through power circuit design** – Electrically equivalent to a 4-pole contactor, with the added advantage of each pole being separately controllable via the DyNet network.

**Flexible mounting solution** – DIN-rail mountable device, designed to be installed into the distribution board supplying power to the controlled circuit.

**Inbuilt diagnostic functionality** – Features circuit run time tracking on each channel and controller online/offline status indication.

**Multiple wiring schemes supported** – Controls single phase and neutral or three phase and neutral (star) wiring configurations.

**Hardware override** – Service override switch accessible from front panel.

**Dimensions:**  
95 x 105 x 75 mm (3.74 x 4.34 x 2.95 in)

**12NC – Ordering Code:**  
913703244609



# Relay Controllers

## DDRC810DT-GL Relay Controller

### Designed to operate any type of switched load

The Dyalite DDRC810DT-GL is ideal for controlling bi-directional motors, such as curtain and blind motors. It is an eight channel device suitable for any switched load up to 10 A per channel, with a maximum box load of 40 A.

**Voltage free changeover SPDT output relays** – Perfect for controlling bi-directional motors.

**Flexible mounting solution** – A DIN-rail mountable device, designed to be installed into the distribution board supplying power to the controlled circuit.

**Inbuilt diagnostic functionality** – Features circuit run time tracking on each channel.

**Standalone or networked operation** – Can operate as a discrete standalone unit, or as part of an integrated control system when connected to the DyNet network.

**Dry contact inputs** – The unit receives instructions from voltage-free button presses.

**Dimensions:**  
94 x 211 x 75 mm (3.70 x 8.31 x 2.95 in)

**12NC – Ordering Code:**  
913703035209



## DMRC210 Relay Controller

### Luminaire mount control of switched loads

The Dyalite DMRC210 is a two channel device that provides intelligent networked control of individual lighting fixtures. The compact design enables mounting directly within the gear enclosure of many lighting fixtures.

**Incorporates two relay outputs** – Used to control mains supply to the fixture.

**Gear enclosure mounting** – Compact design allows the device to be mounted directly within the gear enclosure of many light fittings.

**Fully rated device** – Robust relays provide reliable control of difficult lighting loads.

**Inbuilt diagnostic functionality** – Features controller online/offline status indication.

**Dimensions:**  
240 x 45 x 38 mm (9.45 x 1.77 x 1.50 in)

**12NC – Ordering Code:**  
913703050009



## DDRC1220FR-GL Relay Controller

### Robust control of switched loads

The Dyalite DDRC1220FR-GL provides control of multiple types of switched loads. This general-purpose 12-channel controller supports switched loads of up to 20 A per channel, up to a maximum device load of 180 A.

**Feed-through power circuit design** – Electrically equivalent to a 12-pole contactor, with the added advantage of each pole being separately controllable via the DyNet network.

**Flexible mounting solution** – DIN-rail mountable device, designed to be installed into the distribution board supplying power to the controlled circuit.

**Inbuilt diagnostic functionality** – Features circuit run time tracking on each channel and controller online/offline status indication.

**Multiple wiring schemes supported** – Controls single phase and neutral or three phase and neutral (star) wiring configurations.

**Hardware override** – Service override switch accessible from front panel.

**Dimensions:**  
93 x 215 x 64 mm (3.66 x 8.46 x 2.52 in)

**12NC – Ordering Code:**  
913703243009



## DDBC120-DALI DALI-2 Driver Controller

### Full DALI-2 control solution with inbuilt DALI power supply and driver power management

The Dyalite DDBC120-DALI is ideal for small-scale projects looking for a compact, all-in-one DALI control solution. This controller operates seamlessly with all other Dyalite controllers, sensors, user interfaces and head-end software.

**Single-master solution** – Compatible with a range of DALI fittings and devices, including DALI fluorescent drivers, DALI electronic low voltage transformers, DALI LED fixtures, DALI emergency lighting fixtures and Dyalite DALI sensors and user interfaces.

**Auto-enumeration** – Provides automatic enumeration of drivers when powered on and enables self-repair of the network if a driver fails and is replaced.

**Fully scalable network solution** – Direct mapping from DALI to the DyNet network protocol eliminates DALI imposed limits, such as maximum group sizes.

**Compatible with DALI 209 drivers** – Provides control of tunable white luminaires.

**Dual functionality** – Leverage advantages of a true DALI network solution, whilst still allowing the full functionality of DyNet network control.

**Built-in energy savings** – Control signals can be configured to operate in tandem with the internal relay, which automatically isolates the power circuit when all associated channels are at 0%.

**Integral DALI bus power supply** – Removes the need for provision of a separate external power supply and reduces distribution board wiring complexity.

**Inbuilt diagnostic functionality** – Features lamp and driver failure reporting, driver run time tracking for each driver, emergency test reporting and device/driver online/offline status indication.



**Dimensions:**  
96 x 105 x 75 mm (3.78 x 4.34 x 2.95 in)

**12NC – Ordering Code:**  
913703685109

# DALI Controllers

## DDBC320-DALI DALI-2 Driver Controller

### Full DALI-2 control solution with inbuilt DALI power supply and driver power management

The Dyalite DDBC320-DALI is a three-universe controller, ideal for large-scale projects looking for a powerful all-in-one DALI control solution. This controller operates seamlessly with all other Dyalite controllers, sensors, user interfaces and head-end software, and includes a secured Ethernet port for network communication.

**Single-master solution** – Compatible with a range of DALI fittings and devices including DALI fluorescent drivers, DALI electronic low voltage transformers, DALI LED fixtures, DALI emergency lighting fixtures and Dyalite DALI sensors and user interfaces.

**Compatible with DALI 209 drivers** – Provides control of tunable white and RGBWAF luminaires.

**Driver standby power elimination** – Internal switched relay automatically isolates each universe's power circuit when all drivers are dimmed to 0%.

**Independent universe enumeration** – Commission each universe individually without affecting other universes or controller functionality.

**UL924 Input** – Integrates seamlessly with compatible emergency systems.

**Auto-enumeration** – Provides automatic enumeration of drivers when powered on and enables self-repair of the network if a driver fails and is replaced.

**Silent enumeration** – Constantly checks the DALI bus for changes, automatically enumerating individual driver replacements with no disruption to lighting performance.

**Fully scalable network solution** – Direct mapping from DALI to the DyNet network protocol eliminates DALI imposed limits, such as maximum group sizes.

**Inbuilt Ethernet port** – Directly connecting to a site's LAN, the device can securely report its status and pass network messages via the Dyalite PDDEG-S.

**Driver management tools** – Includes lamp and driver status reporting, driver runtime tracking, and emergency test reporting.



**Dual functionality** – Leverage advantages of a true DALI network solution, whilst still providing access to the full DyNet feature set.

**Flexible mounting solution** – A DIN-rail mountable device, designed to be installed into the distribution board, supplying power to the controlled lighting circuit.

**Integral DALI bus power supply** – Removes the need for provision of a separate external power supply and reduces distribution board wiring complexity.

**Dimensions:**  
95 x 216 x 64 mm (3.74 x 8.5 x 2.52 in)

**12NC – Ordering Code:**  
913703031209

## DDBC516FR Signal Dimmer Controller

### Flexible control of 1-10 V and DALI drivers

The Dyalite DDBC516FR is a five-channel device for controlling DALI drivers. Each control output is selectable to DALI broadcast, DALI addressed, 1-10 V or DSI.

**Multiple protocols supported** – Each of the five control outputs supports DALI broadcast (maximum ten DALI loads/ channel), DALI addressed (maximum ten DALI loads/ channel), 1-10 V (maximum 10 mA sink or source/channel) or DSI (maximum five DSI loads/channel).

**Built-in energy savings** – Control signals can be programmed to operate in tandem with five internal switched outputs, which will automatically isolate the power circuit when all associated channels are at 0%. This is a useful feature as DALI drivers would otherwise draw significant power when lamps are turned off via a DALI command.

**Integral DALI bus power supply** – Removes the need for an additional external device.

**Flexible mounting solution** – A DIN-rail mountable device, designed to be installed into the distribution board supplying power to the controlled circuit.

**Inbuilt diagnostic functionality** – Features lamp and driver failure reporting, driver run time tracking for each driver and the switched output, as well as controller online/offline status indication.

**Dimensions:**  
94 x 211 x 75 mm (3.70 x 8.31 x 2.95 in)

**12NC – Ordering Code:**  
913703031509



## DDBC1200 Signal Dimmer Controller

### Multi-protocol control solution

The Dyalite DDBC1200 features 12 independent output channels, each selectable to DALI Broadcast or 0-10 V control.

**Multiple protocols supported** – The Dyalite DDBC1200 features 12 independent output channels, each selectable to DALI Broadcast or 0-10 V control.

**Dimensions:**  
93 x 215 x 64 mm (3.66 x 8.46 x 2.52 in)

**12NC – Ordering Code:**  
913703372009

**Inbuilt protocol selection** – Installers can toggle each channel between DALI Broadcast and 0/1-10 V without the need for commissioning software.

**Compatible with DALI 209 drivers** – Provides control of tunable white luminaires.

**LED status indicators** – Instant visual feedback on channel status of all 12 outputs.

**Flexible mounting solution** – DIN rail mounting clips designed for installation into the distribution board supplying power to the controlled lighting circuits.

**Inbuilt diagnostic functionality** – Device Online/Offline status and individual control channel status indicators.



## DBC905W Signal Dimmer Controller

### Easy to install controller with flexible mounting options

The Dyalite DBC905 is a nine-channel signal dimmer controller, designed for direct installation within ceiling cavities. The device incorporates structured wiring connectors, to enable quick connection without the use of tools.

**Multiple protocols supported** – Each control output supports DALI broadcast, DALI addressed, 1-10 V and DSI protocols.

**Dimensions:**  
189 x 416 x 35 mm (7.44 x 16.38 x 1.38 in)

**12NC – Ordering Codes:**

Wieland connectors	913703040009
--------------------	--------------

Wieland - high capacity	913703040109
-------------------------	--------------

**Integration ease** – Integrates easily with a Building Management System (BMS) via the DyNet control network, making it ideally suited to commercial office installations.

**No tools required** – The device is available with connectors suited to three major modular wiring brands – CMS Electracom, Wieland and Wago.

**Inbuilt diagnostic functionality** – Includes lamp and driver failure, circuit run time tracking/lamp life, automated battery tests and controller online/offline status indication.

**High capacity option available** – Offers increased capacity, 200 A surge switched outputs and seven DALI loads or ten 1-10 V loads per channel.



# DALI Controllers

## DMBC110 Signal Dimmer Controller

### Luminaire mount multi-protocol control solution

The Dyalite DMBC110 provides intelligent networked control of individual lighting fixtures. The compact design enables versatile and convenient installation.

**Incorporates one relay output and one signal dimmer output** – Provides dimming control of DALI, 1-10 V and DSI compatible drivers and transformers.

**Dimensions:**  
240 x 45 x 38 mm (9.45 x 1.77 x 1.50 in)  
**12NC – Ordering Code:**  
913703030009

**Gear enclosure mounting** – Compact design allows the device to be mounted directly within the gear enclosure of many light fittings.

**Fully rated device** – Robust relay provides reliable control of difficult lighting loads.



## DDC116-UL Signal Dimmer Controller

### Speed up your lighting control design and installations

The Dyalite DDC116-UL provides intelligent networked control of 0-10V and DALI broadcast lighting circuits, delivering the flexibility to easily scale your projects from room-based controls to complete building-wide networked controls. The compact plenum-rated design is compatible with standard junction box wiring schemes, reducing your installation effort and project costs.

**Incorporates one relay output and one signal dimmer output** – Provides dimming control of 0-10 V or DALI broadcast drivers and transformers.

**Flexible deployment** – Suitable for room-based applications or integration across multiple spaces.

**Driver standby power elimination** – Internal relay automatically isolates the lighting power circuit when driver is dimmed to 0%.

**Standalone operation** – Single-button configuration assigns the DDC116-UL to one of five preconfigured lighting zones, enabling individual zone control via the Dyalite range of user interfaces and sensors, without the need for commissioning or head-end software.

**UL924 Input** – Integrates seamlessly with compatible emergency systems.

**Flexible mounting solution** – UL 2043 / Chicago plenum-rated plastic enclosure designed for mounting directly onto a junction box.

**Inbuilt diagnostic functionality** – Features Device Online/Offline status indication.

**Easy to install and configure** – Reduced installation complexity and project costs.

**Networked operation** – Seamless connectivity to the rest of the Dyalite system enables a range of expanded functionality such as automated scheduling, head-end software monitoring and management, and network gateway integration to third-party systems including BACnet, OPC UA, and others.



**Dimensions:**  
112 x 110 x 43 mm (4.40 x 4.33 x 1.69 in)  
**12NC – Ordering Code:**  
913703376709

# Multipurpose Controllers

## DDMC802 Multipurpose Modular Controller

### Control different load types with one device

The Dyalite DDMC802 provides up to eight configurable output channels, controlled by up to four interchangeable control modules. A selection of control modules is available for a variety of load types.

**Single controller solution** – Control a variety of load types from one device.

**Flexible mounting solution** – DIN-rail mountable device, designed to be installed into the distribution board supplying power to the controlled circuit.

**Four module bays** – Accommodates any combination of up to four single modules or two double-size modules.

**Leading edge phase control dimmer module** – Suitable for use with incandescent lamps and some types of dimmable electronic transformers.

**Dimensions:**  
95 x 216 x 74 mm (3.74 x 8.50 x 2.91 in)

**12NC – Ordering Code:**  
913703243509

**Trailing edge phase control dimmer module** – Suitable for use with most types of dimmable electronic transformers.

**Signal dimmer control module** – Suitable for 1-10 V, DSI, and DALI Broadcast control, including DALI 209 tunable white drivers.

**Relay control module** – Suitable for controlling most types of switched loads.

**Fan control module** – 400 VA three-speed fan control.

**Curtain control module** – Provides control of curtains, blinds and other motorised window treatments.

Modules	Description	12NC – Ordering Codes
DGCM102	1 x 2 A Motorised curtain/blind control	913703024409
DGFM102	1 x 2 A Fan control	913703026709
DGRM204	2 x 4 A Relay control	913703261109
DGBM200	2 x Channel Signal dimmer driver	913703261209
DGLM105	1 x 5 A Leading edge dimmer	913703260809
DGLM202	2 x 2 A Leading edge dimmer	913703260909
DGLM402	4 x 2 A Leading edge dimmer	913703261009
DGTM104	1 x 4 A Trailing edge dimmer	913703260609
DGTM202	2 x 2 A Trailing edge dimmer	913703260709
DGTM402	4 x 2 A Trailing edge dimmer	913703024309



## DMC2 Multipurpose Modular Controller

### Control different load types with one device

The Dyalite DMC2 provides multichannel control via two interchangeable output modules. The device is available with a variety of control modules to handle various load types and capacities.

**Single controller solution** – Control a multitude of load types from one device, suited to any segment requiring lighting or switched control.

**Passive cooling** – Fanless design reduces noise, power consumption and maintenance costs.

**Phase-cut dimmer module** – Selectable per channel for leading or trailing edge output. Compatible with most dimming loads.

**Dimensions:**  
540 x 380 x 103 mm (21.26 x 14.96 x 4.06 in)

**12NC – Ordering Codes:**

DMC2-CE	913703666109
DMC2-UL	913703666009

For modules, refer to next page.

**Signal dimming module** – Suitable for controlling 1-10 V, DSI and DALI broadcast drivers. Built-in relays remove power when channel level is at 0%.

**Relay control module** – Suitable for controlling most types of switched loads.

**Flexible mounting solution** – Surface or recess mountable enclosure.



# Multipurpose Controllers

## DMC4 Multipurpose Modular Controller

### Control different load types with one device

The Dyalite DMC4 provides multichannel control via four interchangeable output modules. The device is available with a variety of control modules to handle various load types and capacities.

**Single controller solution** – Control a multitude of load types from one device, suited to any segment requiring lighting or relay control.

**Phase-cut dimming module** – Selectable per channel for leading or trailing edge output. Compatible with most dimming loads.

**Signal dimming module** – Suitable for controlling 1–10 V, DSI and DALI broadcast drivers. Built-in relays remove power when channel level is at 0%.

**Relay control module** – Suitable for controlling most types of switched loads.

**Flexible mounting solution** – Surface or recess mountable enclosure.

**Passive cooling** – Fanless design reduces noise, power consumption and maintenance costs.

**Dimensions:**  
830 x 455 x 106 mm (32.68 x 17.91 x 4.17 in)

#### 12NC – Ordering Codes:

DMC4-CE 913703667909

DMC4-UL 913703667809

*For modules, refer to next page.*



## DDLEDC605GL PWM Controller

### Directly drive LED fittings with PWM voltage-mode outputs

The Dyalite DDLEDC605GL is designed to control LED loads in decorative architectural lighting applications where creative color mixing and sequencing is required. The controller provides six pulse width modulated common anode voltage mode outputs, suitable for directly driving high intensity LED sources. The controller is designed for connection to an external DC power supply, enabling the unit to deliver a range of nominal output voltages. The Dyalite DDLEDC605GL is DMX512 compatible and is suitable for the high chase speeds commonly found in display lighting.

**Designed for connection to external power supply** – The device is connected to an external DC power supply, enabling the unit to deliver a range of nominal output voltages.

**DMX512 compatible** – Capable of receiving native DMX512, allowing use in color mixing or chase sequence applications, such as those found in display lighting.

**Diagnostic functionality** – Controller online/offline status reporting.

**Flexible mounting solution** – A DIN-rail mountable device, designed to be installed into a distribution board or other electrical enclosure.

**Naturally ventilated** – Requires no forced cooling or maintenance.

**Dimensions:**  
95 x 105 x 75 mm (3.74 x 4.13 x 2.95 in)

**12NC – Ordering Code:**  
913703061209



## DMC Control Modules

Name	Description	12NC – Ordering Codes
DSM2	DMC2 Supply module	913703500509
DSM4	DMC4 Supply module	913703668009
DCM-DyNet	DyNet Comms module	913703666209
DMD310-CE	3 x 10 A Signal dimmer driver	913703666609
DMD310-RCBO-CE	3 x 10 A Signal dimmer driver	913703667109
DMD316-CE	3 x 16 A Signal dimmer driver	913703666709
DMD316-RCBO-CE	3 x 16 A Signal dimmer driver	913703667209
DMD316-UL	3 x 16 A Signal dimmer driver	913703667509
DMD316FR-UL	3 x 16 A Signal dimmer driver	913703668709
DMR310-CE	3 x 10 A Relay controller	913703666409
DMR310-RCBO-CE	3 x 10 A Relay controller	913703666909
DMR316-CE	3 x 16 A Relay controller	913703666509
DMR316-RCBO-CE	3 x 16 A Relay controller	913703667009
DMR316-UL	3 x 16 A Relay controller	913703667409
DMR610GL-CE	6 x 10 A Relay controller	913703668209
DMR610GL-RCBO-CE	6 x 10 A Relay controller	913703668309
DMR610GL-UL	6 x 10 A Relay controller	913703668109
DMP310GL-CE	3 x 10 A Phase-cut dimmer	93703666809
DMP310GL-RCBO-CE	3 x 10 A Phase-cut dimmer	913703667309
DMP310GL-UL	3 x 10 A Phase-cut dimmer	913703667609
DMP603GL-CE	6 x 3 A Phase-cut dimmer	913703668509
DMP603GL-RCBO-CE	6 x 3 A Phase-cut dimmer	913703668609
DMP603GL-UL	6 x 3 A Phase-cut dimmer	913703668409
DMP116	1 x 16 A Phase-cut dimmer	913703348309

# HVAC Controllers

## DDFCUC Fan Coil Unit Controller

### Direct control of air conditioning

The Dynalite DDFCUC is a fan coil unit controller, designed for direct connection to components commonly found in heating, ventilation, and air conditioning (HVAC) systems with fan coil units (FCU).

**0-10 V and TRIAC (0-24 V) valve outputs** – Provided for control of hot and cold water valves.

**0-10 V fan output** – Silent, accurate speed signal control of compatible fans.

**1 to 3-speed fan output** – Switched control of LOW/MED/HIGH fan settings.

**GPR (General Purpose Relay)** – Provided for use with electrical heaters or power outlet switching via an external contactor.

**Suitable for non-seasonal two-pipe systems** – Refer to the easy-to-follow DDFCUC Installation Instructions and DDFCUC Commissioning Guide for more information.

**Configurable inputs** – For use with peripheral devices including smoke detector, motion detector, window open/close sensor, airflow detector, drip tray overflow, dirty air filter, and hot water on cold valve. Supports 0-10 V, dry contact, and 20 k $\Omega$  NTC sources.

**0-10V valve position feedback** – With compatible valves, INPUT1 and INPUT2 can capture position feedback for control outputs VALVE1 and VALVE2 respectively.

**Resistive or networked temperature sensors** – Allows the device to use data from a local temperature sensor, or networked temperature sensor such as an Antumbra or Revolution user interface.

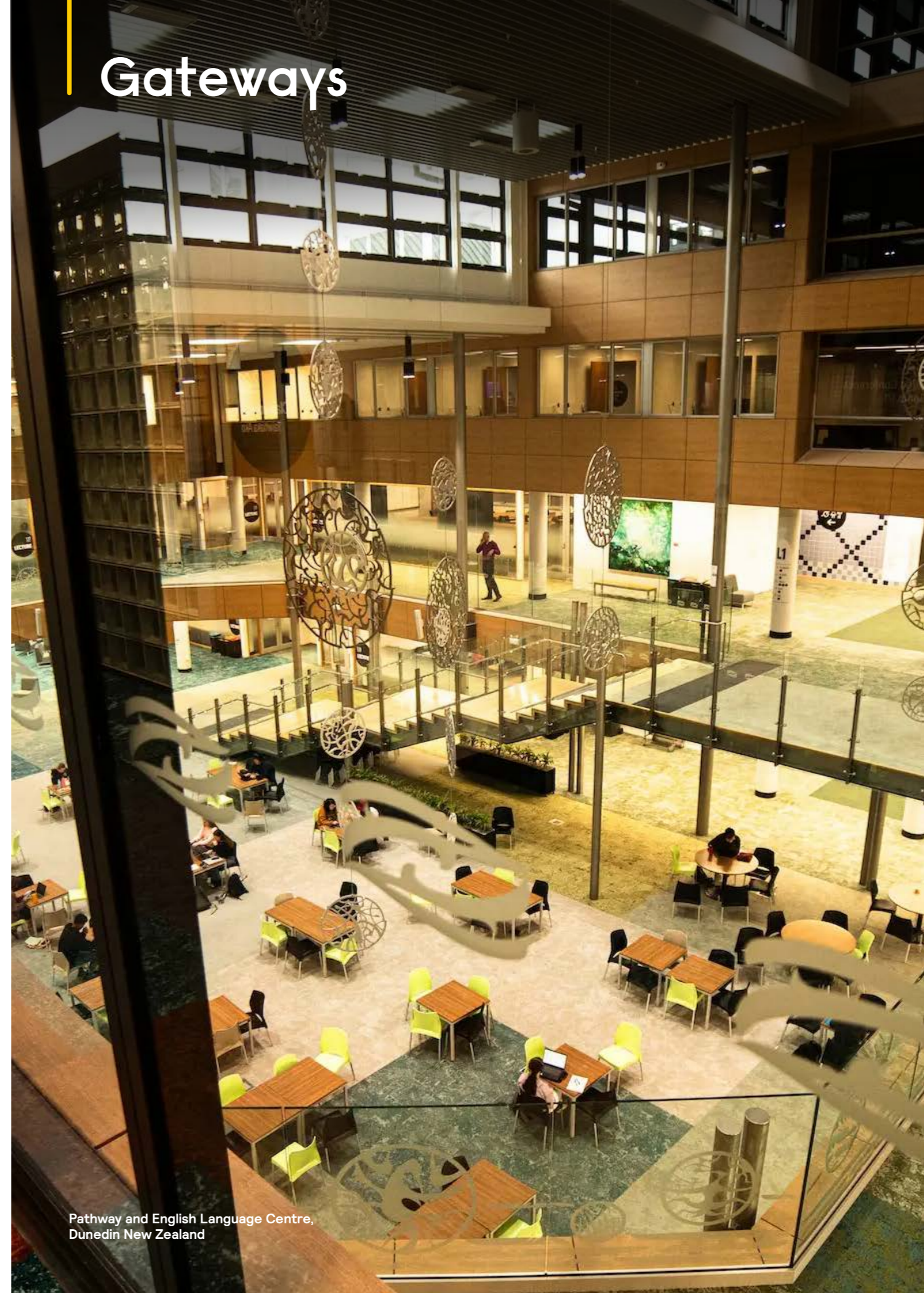
**Networkable** – Can be networked with other Dynalite equipment via the onboard RS-485 DyNet port.

**Dimensions:**  
95 x 108 x 64 mm (3.74 x 4.25 x 2.52 in)

**12NC – Ordering Code:**  
913703367009



# Gateways



Pathway and English Language Centre,  
Dunedin New Zealand

# Network Gateways

## PDDEG-S Ethernet Gateway – Supervisor

### Secure remote connection to the Dyalite System

The Dyalite PDDEG-S provides gateway services between Ethernet and DyNet devices, enabling secure online access to the Philips lighting control system. The gateway enables lighting control via a dedicated Philips app, and access to the timeclock, schedule editor and diagnostic functions via an inbuilt web server.

**System supervisory functions** – Includes online/offline status reporting for connected devices, network traffic logging, secure remote firmware update and lighting control metrics. Inbuilt timeclock and schedule manager allow the user to manage automated operations and task scheduling.

**Multiple integration options** – Supports TCP/UDP, IPv4/IPv6, unicast/multicast/broadcast, DyNet1, DyNet2, Fidelio, BACnet, and 'Text and Binary Integration' protocols. Capable of supporting hundreds of socket connections concurrently.

**Flexible connectivity options** – provides secure cloud connectivity to the building with user configurable routing and a choice of RS-485 and Ethernet bridging functions.

**Powerful custom task engine** – Allows users or third-party systems to run macros such as 'After Hours', 'Shut Down', 'Welcome' and more.

**Web server and app access** – Enables remote access for lighting control, schedule editing and device configuration.

**Secure connection to Dyalite controllers** – Each PDDEG-S supports encrypted communication with up to 25 Ethernet-equipped controllers, including the DDBC320-DALI and DDRG-GRMS-E.

**Dimensions:**  
95 x 216 x 65 mm (3.74 x 8.50 x 2.56 in)

**12NC – Ordering Code:**  
913703027409



### BACnet License

PDDEG-S BACnet	100 point license	SW913703370509
PDDEG-S BACnet	1k point license	SW913703370609
PDDEG-S BACnet	5k Point license	SW913703370709
PDDEG-S BACnet	10k Point license	SW913703370809
Tridium VYKON JACE® 8000 controller	DyNet driver and license	12NC 913703097109

## PDEG Ethernet Gateway

### Flexible Ethernet integration

The Dyalite PDEG provides a multipurpose Ethernet connection to a lighting control system. It supports access to the lighting system via a dedicated app as well as providing a web interface delivering access to the inbuilt timeclock and schedule editor functions. It provides bridging functionality between Ethernet backbone and the DyNet fieldbus devices.

**Large storage capacity** – The device stores large project files internally, which apps use to automatically configure their settings. This saves configuration time and ensures accuracy for phone and tablet control.

**Built-in web server** – Provides control and status via Common Gateway Interface (CGI) protocol. Allows the user to edit and check system settings via the Network Hardware Checker and System Roll Call tools.

**No technical skills needed** – Inbuilt timeclock and schedule manager allow the user to manage operation and task scheduling without advanced technical knowledge.

**Powerful custom task engine** – Allows users or third-party systems to run macros, such as 'After Hours', 'Shut Down', 'Welcome' and more.

**Advanced interoperability** – Supports management of Dyalite devices and PoE fittings on a single system.

**Dimensions:**  
97 x 110 x 38 mm (3.82 x 4.33 x 1.50 in)

**12NC – Ordering Code:**  
913703013809



## PDEB Ethernet Bridge

### Inexpensive Ethernet integration

The Dyalite Ethernet Bridge provides a standard Ethernet connection to a Dyalite lighting control system in applications ranging from tunnels to hotel rooms. It provides bridging functionality between an Ethernet backbone and DyNet devices.

**Powerful custom task engine** – Allows users or third-party systems to trigger macros such as 'After Hours', 'Shut Down', 'Welcome' and more.

**Versatile mounting options** – Hybrid mounting clips allow the device to be mounted on a DIN-rail or to any flat surface.

**Dimensions:**  
97 x 110 x 38 mm (3.82 x 4.33 x 1.50 in)

**12NC – Ordering Code:**  
913703240009



## DDNG485 RS-485/DMX512 Gateway

### Flexible network communications gateway

The Dyalite DDNG485 is a flexible network communications bridge designed for RS-485 networks. The two optically isolated RS-485 ports enable the DDNG485 to implement a trunk and spur topology on large project sites, with the bridge providing a high-speed backbone optically coupled to many lower speed spurs.

**Route DyNet to third-party systems** – Such as audio-visual, Modbus meters, and building automation systems, providing an integrated approach to total building control and energy management.

**DMX512 mode** – Transmit or receive up to 512 channels of DMX with automatic DyNet conversion and task triggering. Provides temporary control of house lights from the DMX console in an auditorium scenario

**Electrical fault isolation** – Faults can be isolated to individual network spurs.

**Internal controls** – Programmable logic controller capable of comprehensive conditional and sequential logic and arithmetic function processing, packet filtering and DyNet to DyNet 2 translation.

**Flexible mounting solution** – DIN-rail mountable, designed to be installed into a distribution board or other electrical enclosure.

**Dimensions:**  
95 x 108 x 64 mm (3.74 x 4.25 x 2.52 in)

**12NC – Ordering Code:**  
913703366709



# Network Gateways

## PDZG-E Zigbee Gateway

### Reliable wireless lighting control

This wireless communication hub translates between Ethernet and Zigbee, connecting multiple Zigbee nodes (compatible luminaires and/or wireless signal dimming controllers) to the Dyalite control system.

**Zigbee PRO wireless communication** – Seamlessly integrate wireless lighting control into a Dyalite system without expensive wiring.

**Wireless mesh network** – Ensures stable and robust lighting control in busy environments.

**Fully compatible with the Dyalite portfolio** – Enable wireless control via Ethernet from any interface, sensor, or task/schedule host device connected to the Dyalite system.

**Wall mount bracket included** – Easy to mount on any wall type.

**Dimensions:**  
89 x 89 x 26 mm (3.50 x 3.50 x 1.02 in)

**12NC – Ordering Code:**  
913703372109



## DDNG-KNX KNX Gateway

### High level KNX integration

The Dyalite DDNG-KNX allows for high level integration between a Dyalite system and BMS using the KNX protocol.

**Directly trigger tasks** – Use the building management system (BMS) to directly control DyNet functions.

**Status request** – Interrogate a Dyalite system to request current status information.

**User controls included** – DyNet/KNX service switches and DyNet/KNX diagnostic LEDs.

**Dimensions:**  
95 x 105 x 75 mm (3.74 x 4.34 x 2.95 in)

**12NC – Ordering Code:**  
913703080509



# Integration Devices

## DDNG232 RS-232 Network Gateway

### DIN-rail serial port integration

The Dyalite DDNG232 network gateway provides cost-effective serial port integration between a DyNet network and third-party systems.

**Seamless integration with third-party systems** – Including AV systems, lighting desks, data projectors, HVAC, BMS and security systems.

**Internal controls** – Programmable logic controller capable of comprehensive conditional and sequential logic and arithmetic function processing.

**Predefined data format library or create your own** – A library of data formats is available for system integrators, or can be created using the onboard conditional logic engine to assemble and transmit user-defined data strings.

**Macro functions available** – Simplify the control of multiple devices.

**Flexible mounting solution** – DIN-rail mountable, designed to be installed into a distribution board or other electrical enclosure.

**Dimensions:**  
95 x 108 x 64 mm (3.74 x 4.25 x 2.52 in)

**12NC – Ordering Code:**  
913703366909



## DLLI8I8O Dry Contact Interface

### Eight-way dry contact interface

The Dyalite DLLI8I8O is an eight-way dry contact interface with LED indicator outputs, that allows mechanical and electronic switches to communicate directly to the DyNet network.

This interface is also capable of driving an infrared LED (not included) to function as an IR blaster to devices supporting IR receive in response to commands from the DyNet network.

**Compact size** – Allows installation in electrical wall boxes for easy integration with third-party user interfaces.

**Eight dry contact inputs** – Each dry contact trigger is individually programmable for a range of tasks.

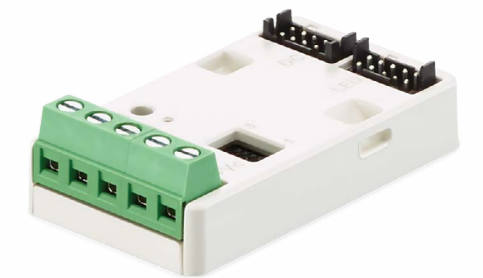
**Eight indicator outputs** – Each output is individually programmable to drive an external LED indicator sharing a common cathode, communicating current system status or settings.

**Allows up to 20 m cable runs** – Enables convenient connection to dry contact interfaces in multiple rooms.

**IR blaster functionality** – Configurable to send infrared commands when paired with a compatible IR LED (required command sequences must be sourced and uploaded via System Builder).

**Dimensions:**  
53 x 30 x 15 mm (2.09 x 1.18 x 0.59 in)

**12NC – Ordering Codes:**  
913703023009  
913703369209 (pack of 5)



# Integration Devices

## DLLI5I-DALI Dry Contact Interface

### Five-way DALI-2 dry contact interface

The Dyalite DLLI5I-DALI enables mechanical and electronic switches to interface directly with a Dyalite DALI controller via the DALI bus.

**DALI device** – Designed to operate seamlessly with the Dyalite DDBC120-DALI or DDBC320-DALI controller.

**Powered directly by the DALI network** – Eliminates the need for any additional network field wiring.

**Five dry contact inputs** – Each dry contact trigger is individually programmable for a range of tasks.

**Fully programmable** – Each individual input is fully software-programmable over the DALI network, supporting multiple functions such as lighting scene selection, room join, and toggling lighting on/off.

**Compact size** – Inputs are presented on flyleads, making the device suitable for installation behind multi-gang switch grids.

**Simple dry contact interface** – Can be used for low-level integration to third-party systems such as security and air conditioning, so that lighting can be coordinated together with other services in the project.

**Dimensions:**  
Housing: 19 x 53 x 30 mm (0.75 x 2.09 x 1.18 in)  
Flyleads: 150 mm (5.9 in)

**12NC – Ordering Code:**  
913703406209



## DDMIDC8 Low Level Input Integrator

### Flexible input integration

The Dyalite DDMIDC8 is designed to enable cost-effective input integration to the Dyalite control system from third-party systems such as security, HVAC and BMS.

**Eight digital inputs** – Each can be individually configured as a dry contact or 0-24V AC/DC input.

**LED indicator on each input** – Provides visual status indication.

**Optical isolation** – All inputs isolated for high noise immunity.

**Four 0-5/0-10 V analogue inputs** – Software selectable.

**Programmable Logic Controller** – Processes comprehensive conditional

and sequential logic and arithmetic functions.

**Dimensions:**  
95 x 105 x 75 mm (3.74 x 4.34 x 2.95 in)

**12NC – Ordering Code:**  
913703081109



# User Interfaces



Flight Club social darts,  
Sydney Australia

# Antumbra

## PAxBPA Antumbra Button US/ANZ

Contemporary two, four, or six-button panel with light-wash effect

The Dyalite Antumbra Button user interface features a sleek, contemporary design and incorporates the latest in field effect technology. Each easy-to-press mechanical button can be customized with text or icons and programmed to perform a wide variety of local and site-wide control functions. The PA2BPA, PA4BPA, and PA6BPA range is suitable for, but not limited to North American, South American, Australian and New Zealand markets.

**Field effect technology** – The user interface detects an approaching user and ‘wakes up’, initiating a wall-wash lighting effect to encourage interaction.

**Supplied as two components** – The Application Module contains buttons, rim, base and mounting plate, which can be mixed and matched to suit décor. The Communication Module contains logical and network functions and can be pre-programmed off-site, allowing commissioning to commence prior to finalizing rim and button options.

**Hidden sensory inputs** – An internal light sensor measures ambient light and adjusts lightwash effect accordingly.

A built-in temperature sensor automatically adjusts air conditioning when integrated into the system.

**Multiple language and icon labelling** – Button labelling language choices include English, Chinese and Arabic. A library of common icons transcends language barriers, which is particularly useful in hospitality applications.

**Décor-matching options** – Rims are available in Aluminum, Chrome, Magnesium and White. Corona polycarbonate button finishes include Magnesium, Silver and White. Flare metallic button finishes include Aluminum, Gold, Jet, Noir, Prestige and Vintage.



**Dimensions:**  
116 x 75 x 36 mm (4.57 x 2.95 x 1.42 in)

**Ordering Code:**  
Please use the online Dyalite Design Studio at <https://designstudio.dyalite.com/#/dl>

## PAxBPE Antumbra Button EU

Contemporary two, four, or six-button panel with light-wash effect

The Dyalite Antumbra Button user interface features a sleek, contemporary design and incorporates the latest in field effect technology. Each easy-to-press mechanical button can be customized with text or icons and programmed to perform a wide variety of local and site-wide control functions. The PA2BPE, PA4BPE, and PA6BPE range is suitable for, but not limited to, European, Middle Eastern, African and Asian markets.

**Field effect technology** – The user interface detects an approaching user and ‘wakes up’, initiating a wall-wash lighting effect to encourage interaction.

**Supplied as two components** – The Application Module contains buttons, rim, base and mounting plate, which can be mixed and matched to suit décor. The Communication Module contains logical and network functions and can be pre-programmed off-site, allowing commissioning to commence prior to finalizing rim and button options.

**Hidden sensory inputs** – An internal light sensor measures ambient light and adjusts lightwash effect accordingly.

A built-in temperature sensor automatically adjusts air conditioning when integrated into the system.

**Multiple language and icon labelling** – Button labelling language choices include English, Chinese and Arabic. A library of common icons transcends language barriers, which is particularly useful in hospitality applications.

**Décor-matching options** – Rims are available in Aluminum, Chrome, Magnesium and White. Corona polycarbonate button finishes include Magnesium, Silver and White. Flare metallic button finishes include Aluminum, Gold, Jet, Noir, Prestige and Vintage.



**Dimensions:**  
88 x 88 x 23 mm (3.46 x 3.46 x 0.90 in)

**Ordering Code:**  
Please use the online Dyalite Design Studio at <https://designstudio.dyalite.com/#/dl>

## DADPA Antumbra Display US/ANZ

Contemporary button panel with colour display

The Dyalite Antumbra Display user interface provides a central colour display to present multiple pages of functions and system information. It incorporates the latest in field effect technology. The contemporary design features a number of button configurations, with each button capable of local or site-wide control functions. The DADPA range is suitable for, but not limited to, North American, South American, Australian and New Zealand markets.

**Field effect technology** – The user interface detects an approaching user and ‘wakes up’, initiating a wall-wash lighting effect to encourage interaction.

**Supplied as two components** – The Application Module contains buttons, rim, base and mounting plate, which can be mixed and matched to suit décor. The Communication Module contains all of the logical and network functions and is pre-programmed off-site, allowing commissioning to commence prior to finish options being finalized.

**Hidden sensory inputs** – An internal light sensor measures ambient light and adjusts lightwash effect accordingly. A built-in temperature sensor automatically adjusts air conditioning when integrated into the system.

**Multiple languages and icons** – Display language choices include English, Chinese and Arabic. A library of common icons transcends language barriers, which is particularly useful in hospitality applications.

**Central colour display** – Allows for display of system information including temperature, time, channel level and current scene. Button function can change when navigating between up to 16 pages.

**Décor-matching options** – Rims are available in Aluminum, Chrome, Magnesium and White. Corona polycarbonate button finishes include Magnesium, Silver and White. Flare metallic button finishes include Aluminum, Gold, Jet, Noir, Prestige and Vintage.



**Dimensions:**  
116 x 75 x 36 mm (4.57 x 2.95 x 1.42 in)

**Ordering Code:**  
Please use the online Dyalite Design Studio at <https://designstudio.dyalite.com/#/dl>

## DADPE Antumbra Display EU

Contemporary button panel with colour display

The Dyalite Antumbra Display user interface provides a central colour display to present multiple pages of functions and system information. It incorporates the latest in field effect technology. The contemporary design features a number of button configurations, with each button capable of local or site-wide control functions. The DADPE range is suitable for, but not limited to, European, Middle Eastern, African and Asian markets.

**Field effect technology** – The user interface detects an approaching user and ‘wakes up’, initiating a wall-wash lighting effect to encourage interaction.

**Supplied as two components** – The Application Module contains buttons, rim, base and mounting plate, which can be mixed and matched to suit décor. The Communication Module contains all of the logical and network functions and is pre-programmed off-site, allowing commissioning to commence prior to finish options being finalized.

**Hidden sensory inputs** – An internal light sensor measures ambient light and adjusts lightwash effect accordingly. A built-in temperature sensor automatically adjusts air conditioning when integrated into the system.

**Multiple languages and icons** – Display language choices include English, Chinese and Arabic. A library of common icons transcends language barriers, which is particularly useful in hospitality applications.

**Central colour display** – Allows for system information to be shown such as temperature, time, channel level and current scene. Button function can change when navigating between the up to 16 pages.

**Décor-matching options** – Rims are available in Aluminum, Chrome, Magnesium and White. Corona polycarbonate button finishes include Magnesium, Silver and White. Flare metallic button finishes include Aluminum, Gold, Jet, Noir, Prestige and Vintage.



**Dimensions:**  
88 x 88 x 22 mm (3.46 x 3.46 x 0.87 in)

**Ordering Code:**  
Please use the online Dyalite Design Studio at <https://designstudio.dyalite.com/#/dl>

# Antumbra

## PAXBLE Antumbra Button Lite EU

Two, four, or six-button panel with dry contact switches

The Dyalite Button Lite is a cost-effective user interface with a sleek, contemporary design, intended for use with any Dyalite load controller featuring dry contact inputs. Available in the full range of Antumbra button and rim finishes, AntumbraLite also supports customized button labelling with text or icons to suit any application.

**Multiple language and icon labelling** – Button labelling language choices include English, Chinese and Arabic. A library of common icons transcends language barriers, which is particularly useful in hospitality applications.

**Décor-matching options** – Buttons and rims are available in a range of attractive polycarbonate and metallic finishes.

**Dimensions:**  
88 x 88 x 24.5 mm (3.46 x 3.46 x 0.96 in)

**Ordering Code:**  
Please use the online Dyalite Design Studio at <https://designstudio.dyalite.com/#/dl>



# Revolution

## PDRDE Revolution Display EU

Contemporary touchscreen user interface

The Dyalite Revolution Display features a sleek, contemporary design and dynamically detects and responds to user presence. The full-colour capacitive touchscreen display can perform a variety of local and site-wide control functions.

The Revolution Euro range is suitable for, but not limited to, European, Middle Eastern, African and Asian markets.

**User proximity detection** – The user interface detects an approaching user and lights up to encourage interaction, then dims automatically as they move away to reduce light pollution.

**Colour touchscreen display** – Provides at-a-glance system information with intuitive, easily understandable control options.

**Supplied as two components** – The application module includes the display and mounting plate. The communication module (DACM) contains logical and network functions and can be programmed off-site to enable commissioning prior to application module installation.

**64-channel DMX Tx support** – Can be factory-set to DMX instead of DyNet, to communicate directly with DMX fixtures.

**Multiple language and icon labelling** – Language choices include English, Chinese and Arabic. A library of common icons transcends language barriers, which is particularly useful in hospitality applications.

**Hidden sensory inputs** – An internal light sensor measures ambient light and adjusts the lightwash effect accordingly. A built-in temperature sensor automatically adjusts air conditioning when integrated into the system.



**Dimensions:**  
88 x 88 x 38 mm (3.46 x 3.46 x 1.50 in)

**12NC – Ordering Codes:**

PDRDxxE-xxB-x (Black) 913703375209

PDRDxxE-xxW-x (White) 913703252009

## PDRxA Revolution Button US/ANZ

Contemporary two-, four-, or eight-button panel with backlit buttons

The Dyalite Revolution Button user interface features a sleek, contemporary design and incorporates the latest in field effect technology. Each easy-to-press mechanical button can be customized with text or icons and programmed to perform a wide variety of local and site-wide control functions. The Revolution American range is suitable for, but not limited to, North American, South American, Australian and New Zealand markets.

**Field effect technology** – The user interface detects an approaching user and lights up to encourage interaction.

**Color backlight** – Customize each button's backlight from an RGB color palette.

**Supplied as two components** – The Application Module contains buttons, rim, base and mounting plate, which can be mixed and matched to suit décor. The Communication Module (DACM) contains logical and network functions and can be pre-programmed off-site, allowing commissioning to commence prior to finalizing rim and button options.

**Multiple language and icon labelling** – Button labelling language choices include English, Chinese and Arabic. A library of common icons transcends language barriers, which is particularly useful in hospitality applications.

**Custom button engraving** – Available on request.

**Décor-matching options** – Buttons and rims are available in a range of attractive glass-look polycarbonate finishes.

**64-channel DMX Tx support** – Can be set up to communicate directly with DMX fixtures.



**Dimensions:**  
116 x 76 x 38 mm (4.57 x 2.99 x 1.50 in)

**Ordering Code:**  
Please use the online Dyalite Design Studio at <https://designstudio.dyalite.com/#/dl>

## PDRxE Revolution Button EU

Contemporary two-, four-, or eight-button panel with backlit buttons

The Dyalite Revolution Button user interface features a sleek, contemporary design and incorporates the latest in field effect technology. Each easy-to-press mechanical button can be customized with text or icons and programmed to perform a wide variety of local and site-wide control functions. The Revolution Euro range is suitable for, but not limited to, European, Middle Eastern, African and Asian markets.

**Field effect technology** – The user interface detects an approaching user and lights up to encourage interaction.

**Color backlight** – Customize each button's backlight from an RGB color palette.

**Supplied as two components** – The Application Module contains buttons, rim, base and mounting plate, which can be mixed and matched to suit décor. The Communication Module (DACM) contains logical and network functions and can be pre-programmed off-site, allowing commissioning to commence prior to finalizing rim and button options.

**Multiple language and icon labelling** – Button labelling language choices include English, Chinese and Arabic. A library of common icons transcends language barriers, which is particularly useful in hospitality applications.

**Custom button engraving** – Available on request.

**Décor-matching options** – Buttons and rims are available in a range of attractive glass-look polycarbonate finishes.

**64-channel DMX Tx support** – Can be set up to communicate directly with DMX fixtures.



**Dimensions:**  
88 x 88 x 38 mm (3.46 x 3.46 x 1.50 in)

**Ordering Code:**  
Please use the online Dyalite Design Studio at <https://designstudio.dyalite.com/#/dl>

# Revolution

## PDRxxxE Revolution Multigang Frames EU

Two and three multigang frames for Revolution user interfaces and the Simon Electric V8 range

Revolution multigang frames can include any electrical module from the Simon Electric V8 range\* – Mains outlets, networking ports, audiovisual connectors, room status indicators, doorbells, and more. Revolution multigang provides the perfect combination of power and connectivity options for a complete project offering.

\*Please refer to the Simon Electric V8 range in your region.

**Multiple mounting options** – The Revolution range is designed to satisfy high-end market expectations by offering multiple user interface mounting options. Two- and three-gang frames are available that include Button, Display and V8 modules, enabling customers to select their preferred combination.

**Matching colour options** – Multigang frames are available in the same colours and finishes as single gang Revolution button user interfaces, providing a seamless installation of multiple modules.

**Two to eight button modules** – On each button module, you can select from two to eight buttons engraved with text and/or icons (eight-button modules shown for illustration purposes).



**Dimensions:**  
Two-gang: 88 x 176 x 10 mm  
(3.46 x 6.93 x 0.40 in)  
Three-gang: 88 x 264 x 10 mm  
(3.46 x 10.39 x 0.40 in)

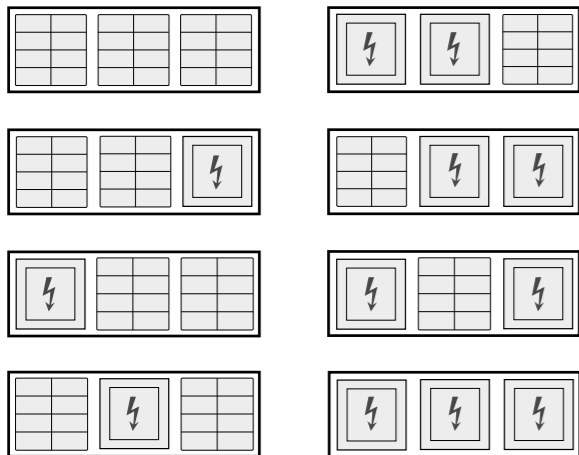
**Ordering Codes:**  
Please use the online Dynalite Design Studio at <https://designstudio.dynalite.com/#/dl>

**Dynalite Multigang Mounting Accessory EU DMGMAE** is a reusable tool enabling perfect alignment of your multigang panels (Sold separately).

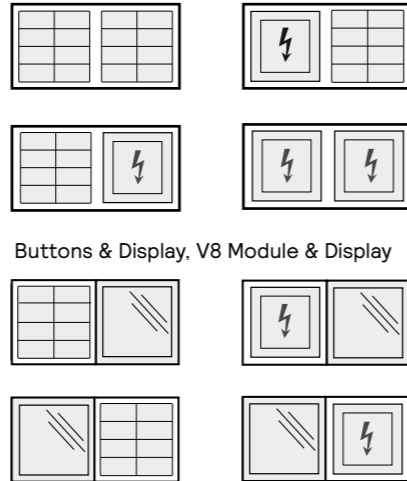
**12NC – Ordering Code:**  
913703274609



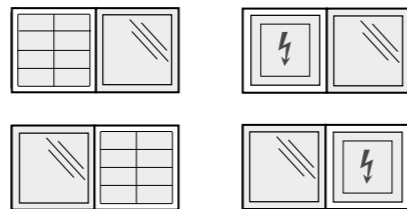
### Revolution three-gang Buttons, V8 Module



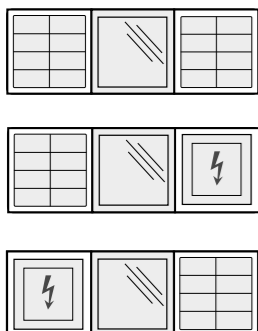
### Revolution two-gang Buttons & V8 Module



### Buttons & Display, V8 Module & Display



### Buttons, Display, V8 Module



**PDR8DxE-BBB-S**

**1, 2, or 3-Gang\* Module Options**  
8 = Eight Buttons  
4 = Four Buttons  
2 = Two Buttons  
D = Display Module  
V = V8 Module  
x = Not selected

**Button Finish**  
B = Black  
W = White  
A = Aluminum  
G = Gold

**Frame Finish\*\***  
BB = Black  
WW = White  
AA = Aluminum  
GG = Gold

**Example**  
S = Standard Labelling  
L = Custom Labelling

\* Revolution Display must be in the centre position for 3-Gang orders.  
\*\* 1-gang Revolution Display only available in Black or White frame.

# Glass Touch

## PATPA Glass Touch US/ANZ

Contemporary smooth glass panels with capacitive touch technology

The Dynalite Glass Touch user interface has a smooth glass touch surface with six touch areas. It also incorporates the latest in field effect technology to sense a person's presence. The contemporary design features a number of button configurations, with each button capable of local or site-wide control functions. The PATPA range is suitable for, but not limited to, North American, South American, Australian and New Zealand markets.

**Field effect technology** – The user interface detects an approaching user and 'wakes up', initiating a wall-wash lighting effect to encourage interaction.

**Capacitive touch technology** – Smooth glass finish detects the presence of a finger and triggers a button press action.

**Supplied as two components** – The Application Module contains buttons, rim, base and mounting plate, which can be mixed and matched to suit décor. The Communication Module contains all of the logical and network functions and is pre-programmed off-site, allowing commissioning to commence prior to finish options being finalized.

**Hidden sensory inputs** – An internal light sensor measures ambient light and adjusts lightwash effect accordingly. A built-in temperature sensor automatically adjusts air conditioning when integrated into the system.

**Multiple language and icon labelling** – Button labelling language choices include English, Chinese and Arabic. A library of common icons transcends language barriers, which is particularly useful in hospitality applications.

**Décor-matching options** – Rims are available in Aluminum, Black, Chrome and White. Fascia finishes include Black, Silver and White.



**Dimensions:**  
116 x 75 x 22 mm (4.57 x 2.95 x 0.87 in)

**Ordering Code:**  
Please use the online Dynalite Design Studio at <https://designstudio.dynalite.com/#/dl>

## PATPE Glass Touch EU

Contemporary smooth glass panels with capacitive touch technology

The Dynalite Glass Touch user interface has a smooth glass touch surface with six touch areas. It also incorporates the latest in field effect technology to sense a person's presence. The contemporary design features a number of button configurations, with each button capable of local or site-wide control functions. The PATPE range is suitable for, but not limited to, European, Middle Eastern, African and Asian markets.

**Field effect technology** – The user interface detects an approaching user and 'wakes up', initiating a wall-wash lighting effect to encourage interaction.

**Capacitive touch technology** – Smooth glass finish detects the presence of a finger and triggers a button press action.

**Supplied as two components** – The Application Module contains buttons, rim, base and mounting plate, which can be mixed and matched to suit décor. The Communication Module contains all of the logical and network functions and is pre-programmed off-site, allowing commissioning to commence prior to finish options being finalized.

**Hidden sensory inputs** – An internal light sensor measures ambient light and adjusts lightwash effect accordingly. A built-in temperature sensor automatically adjusts air conditioning when integrated into the system.

**Multiple language and icon labelling** – Button labelling language choices include English, Chinese and Arabic. A library of common icons transcends language barriers, which is particularly useful in hospitality applications.

**Décor-matching options** – Rims are available in Aluminum, Black, Chrome and White. Fascia finishes include Black, Silver and White.



**Dimensions:**  
88 x 88 x 22 mm (3.46 x 3.46 x 0.87 in)

**Ordering Code:**  
Please use the online Dynalite Design Studio at <https://designstudio.dynalite.com/#/dl>

# DirectSet

## DSxA DirectSet User Interface Range

### Versatile preconfigured digital wall stations

The Dyalite DirectSet range of preconfigured wall station user interfaces adds simple, reliable controls to Dyalite projects. Built-in dual RJ45 ports provide hassle-free wiring termination, while the familiar single-gang form factor ensures seamless installation.

Preloaded with multiple button configurations from three to eight buttons, selectable via easily accessible rotary switches, each panel features standard labelling and supports all common functions including on/off, dimming, and preset selection.

*NOTE: Faceplate not included. Fits most standard wallplates (see Hardware Note below).*

#### Integrated dual RJ45 connections –

Integrated network connections provide hassle-free termination and daisy-chaining without additional adapters.

**Eight button configurations** – Ranging from single-scene ramping to eight-button scene and zone control.

**Factory configured** – Preloaded with configurations for compatibility with *Dyalite's Single System Architecture (SSA)* lighting control solution. Configurations are manually selectable from accessible rotary switches, eliminating the need for commissioning.

**Familiar single-gang form factor** – Standard North American wall switch format ensures seamless integration with industry standard electrical boxes and cover plates.

**Full DyNet compatibility** – Works seamlessly with all Dyalite network devices.

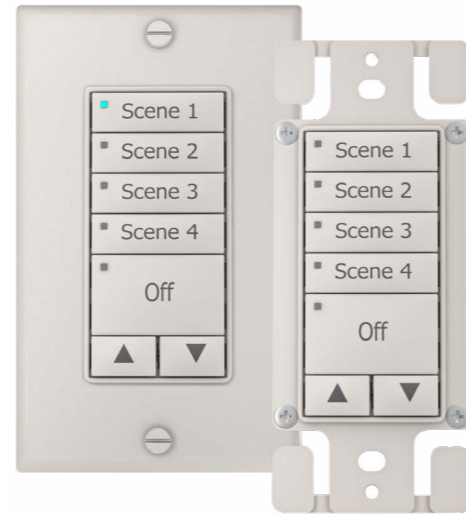
**System Builder support** – Full configuration, firmware updates, and commissioning through existing Dyalite tools.

**Custom button labelling** – Available on request.

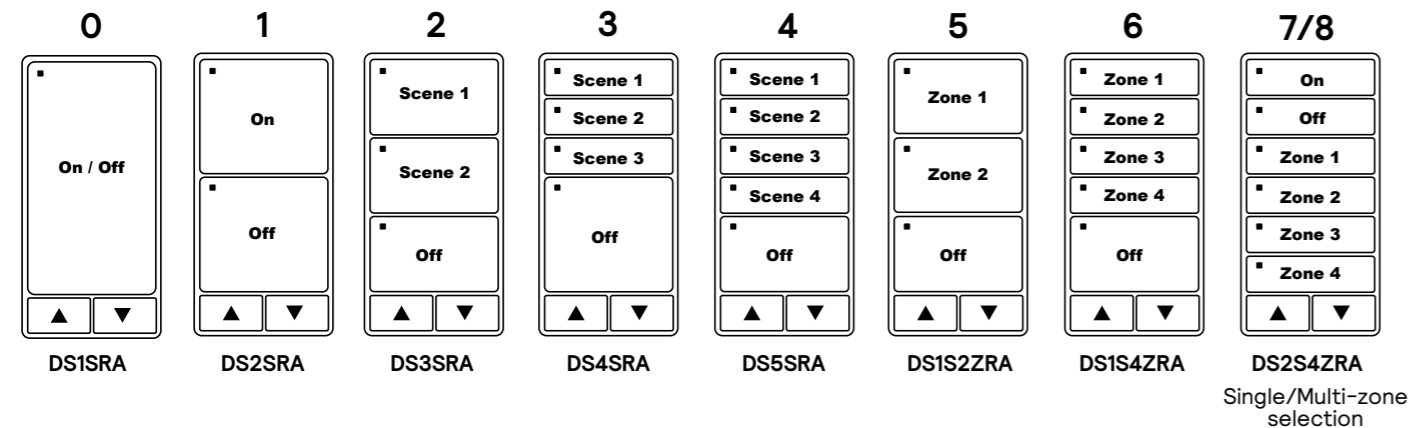
#### Dimensions:

14.2 x 1.7 x 0.8 in (106 x 44 x 20 mm)

Product	Description	12NC – Ordering Codes
DS1SRA-W-DN	Configuration 0: 1 Scene & Ramping	913703410209
DS2SRA-W-DN	Configuration 1: 2 Scene & Ramping	913703410309
DS3SRA-W-DN	Configuration 2: 3 Scene & Ramping	913703410409
DS4SRA-W-DN	Configuration 3: 4 Scene & Ramping	913703410509
DS5SRA-W-DN	Configuration 4: 5 Scene & Ramping	913703410609
DS1S2ZRA-W-DN	Configuration 5: 1 Scene + 2 Zones & Ramping	913703410709
DS1S4ZRA-W-DN	Configuration 6: 1 Scene + 4 Zones & Ramping	913703410809
DS2S4ZRA-W-DN	Configuration 7/8: 2 Scene + 4 Zones & Ramping	913703410909



### Available layouts



#### Hardware Note

DirectSet button panels can be installed with almost any Decora/Decorator or GFCI cut-out faceplate.

Test the plate fit and panel operation before finalizing installation.

#### Recommended Decora faceplates:

- Leviton 84401-40 (stainless steel)
- Leviton 80401 (thermoset plastic)
- Pass & Seymour Legrand TradeMaster® (nylon)

#### Non-compatible faceplates:

- Pass & Seymour Legrand SS26/226/26IG (stainless steel)
- Mulberry 97401 (stainless steel)
- Eaton PJ26W (polycarbonate)
- Hubbell NP26/P26 (polycarbonate)

# Touchscreen

## PDTS Networked Touchscreen

### Advanced building automation and control at your fingertips

Designed as an integral part of the Dyalite system, the PDTS offers intelligent control and direct access to scheduling, scene editing, diagnostics, and local environmental sensing. Combining a powerful onboard processor with contemporary design cues from the Antumbra user interface range, the PDTS is a sleek, functional complement to any project.

**178 mm capacitive touchscreen** – With high resolution, rich color and wide viewing angle.

**Proximity sensor** – Triggers soft halo light effect to welcome user interaction.

**Ethernet port** – Provides access for commissioning.

**Internal astronomical timeclock** – Enables advanced scheduling of behaviour, options, and automated tasks based on time of day or sunrise/sunset.

**Customizable graphical menus** – Seamless control of lighting, curtains/blinds, HVAC, A/V equipment and compatible third-party systems.

**Built-in environmental sensors** – Humidity and temperature can be displayed on standby screen and communicated to third-party systems.

**Templated commissioning option** – Simply load the project XML file for fast configuration, or upload custom web pages from System Builder.

**Thin profile and easy mounting** – Fits industry-standard double wall boxes (EU or US).

**Secure access** – Employs HTTPS for secure, encrypted network communication, with support for onboard security certificates.

**User authentication** – Secure login feature available for CGI commands and user functions, with customizable access levels for each user.



#### Dimensions:

124 x 184 x 40 mm (7.24 x 4.88 x 1.57 in)

#### 12NC – Ordering Code:

PDTS 913703130509

#### Accessories:

DDNP1501 (12 VDC network power supply) 913703090309

# Communication

## DACM-DyNet DyNet Communication Module

### DyNet network interface for Antumbra and Revolution user interfaces

The DACM-DyNet is a DyNet communication module that connects Antumbra and Revolution user interfaces to the Dyalite system.

**Powered by DyNet** – Does not require an external power supply.

**64-channel DMX Tx support** – Can be set up to communicate directly with DMX fixtures.

**Onboard processor** – Contains all logical and network functions and can be commissioned prior to installation.

**Functions without application module** – Can be installed, wired and tested without application module, avoiding fascia damage during ongoing construction.

**Pre-configuration** – Can store and recall up to 21 configurations using the DIP switch, streamlining the commissioning and installation process.

**Dimensions:**  
45 x 43 x 25 mm (1.77 x 1.70 x 0.98 in)

**12NC – Ordering Code:**  
913703072809





Becton cafe – Yale University,  
Connecticut USA

## DyNet Sensors

### DUS360CR Multifunction Sensor

#### Low profile recessed 360° ceiling sensor

The Dynalite DUS360CR is a recess mountable 360 degree multifunction sensor that combines motion detection (PIR), infrared remote control reception (IR) and ambient light level detection (PE) into one device in applications such as offices, lecture theatres and homes.

**Motion detection feature** – Detects the presence or absence of motion and adjusts lights accordingly.

**Segmented click-up bezel** – Surrounds the motion sensor element and enables a portion of the sensing field to be masked. This prevents nuisance detection from adjacent doorways or corridors.

**Ambient light level regulation** – In applications where it is critical to maintain precise light levels, the PE function reads ambient levels and adjusts artificial light accordingly.

**Infrared receive capability** – Manually adjust light levels using a hand-held remote control, via the inbuilt IR receive sensor.

**Daylight harvesting mode** – Delivers automatic energy savings.

**Corridor hold** – Links corridor areas with adjacent rooms so corridor remains lit while occupancy is detected in adjacent rooms.

**Suitable for plenum use** – UL approved for installation in air-handling plenum spaces.

**Dimensions:**  
72 dia. x 41 mm (2.83 dia. x 1.61 in)

**12NC – Ordering Code:**  
913703689609



### DUS360CR-DA Multifunction Sensor

#### Low profile recessed 360° ceiling sensor

The Dynalite DUS360CR-DA is a recess mountable 360 degree motion sensor that combines motion detection (PIR), infrared remote control reception (IR) and ambient light level detection (PE) into the one device. Integrated DIP switches allow physical adjustment of the sensor's area addressing, no-motion time-out period, and corridor hold functionality, for commissioning-free installation and replacement.

**Low profile design** – Flush-mounted 360 degree ceiling-mount motion detection (PIR) sensor.

**No software set-up** – All functionality can be achieved with the built-in DIP switches for area addressing, no-motion time-out and other advanced features.

**Rapid configuration** – Up to 31 individual addressing areas of control.

**User-selectable options** – No-motion time-out selectable to 30 seconds, 5 minutes, 15 minutes or 30 minutes.

**Corridor hold** – Links corridor areas with adjacent rooms so corridor remains lit while occupancy is detected in adjacent rooms.

**Suitable for plenum use** – UL approved for installation in air-handling plenum spaces.

**Dimensions:**  
72 dia. x 41 mm (2.83 dia. x 1.61 in)

**12NC – Ordering Code:**  
913703029309



# DyNet Sensors

## DUS360CS Multifunction Sensor

### Surface mount 360° ceiling sensor

The Dyalite DUS360CS is a surface mountable 360 degree multifunction sensor that combines motion detection (PIR), infrared remote control reception (IR) and ambient light level detection (PE) into one device in applications such as hotels, restaurants and homes.

**Motion detection feature** – Detects the presence or absence of motion and adjusts lights accordingly.

**Segmented click-up bezel** – Surrounds the motion sensor element and enables a portion of the sensing field to be masked. This prevents nuisance detection from adjacent doorways or corridors.

**Infrared receive capability** – Manually adjust light levels using a hand-held remote control, via the inbuilt IR receive sensor.

**Ambient light level regulation** – In applications where it is critical to maintain precise light levels, the PE function reads ambient levels and adjusts artificial light accordingly.

**Daylight harvesting mode** – Delivers automatic energy savings.

**Infrared receive capability** – Manually adjust light levels using a hand-held remote control, via the inbuilt IR receiver.

**Corridor hold** – Links corridor areas with adjacent rooms so corridor remains lit while occupancy is detected in adjacent rooms.

**Dimensions:**  
105 x 46 mm (4.34 x 1.81 in)

**12NC – Ordering Code:**  
913703243109



## DUS30CS Multifunction Directional Sensor

### Wall/ceiling mount 30° multifunction sensor

The DUS30CS is wall or ceiling mountable multifunction sensor that combines motion detection (PIR), infrared remote control reception (IR) and ambient light level detection (PE) into one device in applications such as offices, industrial buildings and homes.

**Motion detection feature** – Detects the presence or absence of motion and adjusts lights accordingly.

**Ambient light level regulation** – In applications where it is necessary to maintain even lighting, the PE function reads ambient levels and adjusts artificial light accordingly.

**Daylight harvesting mode** – Delivers automatic energy savings.

**Infrared receive capability** – Manually adjust light levels using a hand-held remote control, via the inbuilt IR receive sensor.

**Multiple mounting options** – The sensor has a 30° scan pattern with flexible angle adjustment and can be recessed or surface mounted on a wall or ceiling.

**Corridor hold** – Links corridor areas with adjacent rooms so corridor remains lit while occupancy is detected in adjacent rooms.

**IP54 rating** – Dust- and splash-resistant housing allows installation in a variety of indoor and outdoor applications.

**Dimensions:**  
98 x 90 x 153 mm (3.86 x 3.54 x 6.02 in)

**12NC – Ordering Code:**  
913703244309



## DUS804CS-UP Multifunction Ultrasonic Sensor

### Surface mount ceiling sensor with ultrasonic capability

The Dyalite DUS804CS-UP is a surface mountable 360 degree multifunction sensor that combines ultrasonic (UP), motion detection (PIR), infrared remote control reception (IR) and ambient light level detection (PE) into one device in applications such as offices, industrial buildings and secure areas of public buildings.

**Motion detection feature** – Detection of motion within scanned area triggers a programmed lighting action. Ultrasonic technology enables motion detection behind fixed objects.

**Ambient light level regulation** – In applications where it is critical to maintain precise light levels, the PE function reads ambient levels and adjusts artificial light accordingly.

**Infrared receive capability** – Manually adjust light levels using a hand-held remote control, via the inbuilt IR receive sensor of the DUS804CS-UP.

**Daylight harvesting mode** – Delivers automatic energy savings.

**Corridor hold** – Links corridor areas with adjacent rooms so corridor remains lit while occupancy is detected in adjacent rooms.

**Dimensions:**  
90 dia. x 32 mm (3.54 dia. x 1.26 in)

**12NC – Ordering Code:**  
913703070409



## DUS90CS Multifunction Directional Sensor

### Wall/ceiling mount 90° multifunction sensor

The DUS90CS is wall or ceiling mountable multifunction sensor that combines motion detection (PIR), infrared remote control reception (IR) and ambient light level detection (PE) into one device in applications such as offices, industrial buildings and homes.

**Motion detection feature** – Detects the presence or absence of motion and adjusts lights accordingly.

**Ambient light level regulation** – In applications where it is necessary to maintain even lighting, the PE function reads ambient levels and adjusts artificial light accordingly.

**Daylight harvesting mode** – Delivers automatic energy savings.

**Infrared receive capability** – Manually adjust light levels using a hand-held remote control, via the inbuilt IR receive sensor.

**Multiple mounting options** – The sensor has a 90° scan pattern with flexible angle adjustment and can be recessed or surface mounted on a wall or ceiling.

**Corridor hold** – Links corridor areas with adjacent rooms so corridor remains lit while occupancy is detected in adjacent rooms.

**IP54 rating** – Dust- and splash-resistant housing allows installation in a variety of indoor and outdoor applications.

**Dimensions:**  
98 x 90 x 153 mm (3.86 x 3.54 x 6.02 in)

**12NC – Ordering Code:**  
913703244209



# DALI Sensors

## DNS360LB-CR-PIR-DALI Multifunction Sensor

Low-profile recessed 360° ceiling sensor powered by the DALI network

The Dyalite DNS360LB-CR-PIR-DALI is a recess mountable 360° multifunction sensor that combines motion detection (PIR), infrared remote-control reception (IR), and ambient light level detection (PE) in one device. The sensor is powered and communicates with the networked control system via a DALI bus.

**DALI device** – Designed to operate seamlessly with the Dyalite DDBC120-DALI or DDBC320-DALI controller.

**Powered directly by the DALI network** – Eliminates the need for additional network field wiring.

**Motion detection feature** – Detects the presence or absence of motion and triggers a programmed action.

**Segmented click-up bezel** – Surrounds the motion sensor element and enables a portion of the sensing field to be masked. This prevents nuisance detection from adjacent doorways or corridors.

**Ambient light level detection** – In applications where precise, even lighting is critical, the PE function measures ambient levels and adjusts artificial light accordingly.

**Daylight harvesting** – Delivers automatic energy savings.

**Infrared receive capability** – Enables sign-on identification to the networked system.

**Corridor hold** – Links corridor areas with adjacent rooms so corridor remains lit while occupancy is detected in adjacent rooms.

**Dimensions:**  
41 x 72 mm (1.61 x 2.83 in)

**Ordering Codes:**

Product	Colour	12NC
DNS360LB-CR-PIR-DALI	RAL9003 (White)	913703274509
DNS360LB-CR-PIR-DALI-RAL9005	RAL9005 (Black)	913703404809



## DNS360LB-CS-PIR-DALI Multifunction Sensor

Surface mount 360° ceiling sensor

The Dyalite DNS360LB-CS-PIR-DALI is a surface-mountable 360° multifunction sensor that combines motion detection (PIR), infrared remote-control reception (IR), and ambient light level detection (PE) in one device. The sensor is powered and communicates with the networked control system via a DALI bus.

**DALI device** – Designed to operate seamlessly with the Dyalite DDBC120-DALI or DDBC320-DALI controller.

**Powered directly by the DALI network** – Eliminates the need for additional network field wiring.

**Motion detection feature** – Detects the presence or absence of motion and triggers a programmed action.

**Segmented click-up bezel** – Surrounds the motion sensor element and enables a portion of the sensing field to be masked. This prevents nuisance detection from adjacent doorways or corridors.

**Multiple mounting options** – Can be partially recessed or surface-mounted using the supplied butterfly clips or junction box.

**Ambient light level detection** – In applications where precise, even lighting is critical, the PE function measures ambient levels and adjusts artificial light accordingly.

**Daylight harvesting** – Delivers automatic energy savings.

**Infrared receive capability** – Inbuilt IR sensor lets you manually adjust light levels using a compatible hand-held RC5 IR remote.

**Corridor hold** – Links corridor areas with adjacent rooms so corridor remains lit while occupancy is detected in adjacent rooms.

**Dimensions:**  
46 x 111 mm (1.82 x 4.37 in)

**Ordering Codes:**

Product	Colour	12NC
DNS360LB-CS-PIR-DALI	RAL9003 (White)	913703404909
DNS360LB-CS-PIR-DALI-RAL9005	RAL9005 (Black)	913703405009



## DUS30LHB-D Multifunction Directional Sensor

Long-range high bay DALI network sensor

The Dyalite DUS30LHB-D is a 30 degree multifunction sensor that combines motion detection (PIR) and ambient light level detection (PE) in one device. The sensor uses the DALI protocol for power and communications to a network control system, eliminating the need for additional network field wiring. This sensor is useful for long-range detection.

**DALI device** – Designed to operate seamlessly with the Dyalite DDBC120-DALI or DDBC320-DALI controller.

**Powered directly by the DALI network** – Eliminates the need for any additional network field wiring.

**Motion detection feature** – Detects the presence or absence of motion and triggers a programmed action.

**Ambient light level detection** – In applications where it is critical to maintain precise lighting levels, the PE function reads ambient levels and adjusts artificial light accordingly.

**Daylight harvesting** – When used in conjunction with networked open loop daylight sensor.

**Infrared receive capability** – Enables sign-on identification to the networked system.

**Corridor hold** – Links corridor areas with adjacent rooms so corridor remains lit while occupancy is detected in adjacent rooms.

**Targeted positioning** – Directional wallmounting block allows sensors to be easily mounted and directed to the required area.

**Dimensions:**  
66 x 70 x 61 mm (2.60 x 2.76 x 2.40 in)

**12NC – Ordering Code:**  
913703015609



## DUS90WHB-D Multifunction Directional Sensor

Wide-angle high bay DALI network sensor

The Dyalite DUS90WHB-D is a 90 degree multifunction sensor that combines motion detection (PIR) and ambient light level detection (PE) in one device. The sensor uses the DALI protocol for power and communications to a network control system, eliminating the need for additional network field wiring. This is a wide-angle, general-purpose sensor.

**DALI device** – Designed to operate seamlessly with the Dyalite DDBC120-DALI or DDBC320-DALI controller.

**Powered directly by the DALI network** – Eliminates the need for any additional network field wiring.

**Motion detection feature** – Detects the presence or absence of motion and triggers a programmed action.

**Ambient light level detection** – In applications where it is critical to maintain precise lighting levels, the PE function reads ambient levels and adjusts artificial light accordingly.

**Daylight harvesting** – When used in conjunction with networked open loop daylight sensor.

**Infrared receive capability** – Enables sign-on identification to the networked system.

**Corridor hold** – Links corridor areas with adjacent rooms so corridor remains lit while occupancy is detected in adjacent rooms.

**Targeted positioning** – Directional wallmounting block allows sensors to be easily mounted and directed to the required area.

**Dimensions:**  
66 x 70 x 61 mm (2.60 x 2.76 x 2.40 in)

**12NC – Ordering Code:**  
913703015509



# DALI Sensors

# System Kits

## DUS90AHB-D Multifunction Directional Sensor

### Aisleway high bay DALI network sensor

The Dynalite DUS90AHB-D is a 90 degree multifunction sensor that combines motion detection (PIR) and ambient light level detection (PE) in one device. The sensor uses the DALI protocol for power and communications to a network control system, eliminating the need for additional network field wiring. This sensor is ideal for mounting between warehouse shelving.

**DALI device** – Designed to operate seamlessly with the Dynalite DDBC120-DALI or DDBC320-DALI controller.

**Powered directly by the DALI network** – Eliminates the need for any additional network field wiring.

**Motion detection feature** – Detects the presence or absence of motion and triggers a programmed action.

**Ambient light level detection** – In applications where it is critical to maintain precise lighting levels, the PE function reads ambient levels and adjusts artificial light accordingly.

**Daylight harvesting** – When used in conjunction with networked open loop daylight sensor.

**Infrared receive capability** – Enables sign-on identification to the networked system.

**Corridor hold** – Links corridor areas with adjacent rooms so corridor remains lit while occupancy is detected in adjacent rooms.

**Targeted positioning** – Directional wallmounting block allows sensors to be easily mounted and directed to the required area.

**Dimensions:**  
66 x 70 x 61 mm (2.60 x 2.76 x 2.40 in)

**12NC – Ordering Code:**  
913703015409



Pala High-end Residential -  
Queensland, Australia

# General

## Single System Architecture

An easy-to-install system that expands to suit different indoor areas

The system empowers electrical installers to create lighting control functionality quickly and easily with DIP switches and button settings. Capable of 0-10 V dimming and DALI broadcast dimming.

The system enables customers to configure different areas and network specific devices together for code-compliant lighting control functionality without requiring commissioning software. It offers standalone control of up to five lighting zones plus plug load.

Optionally, it can be networked for even larger projects. Customers can use System Builder commissioning software to integrate with a Building Management System over BACnet or to be part of a larger-scale system solution.

**High capacity switching relay** – 16 A lighting load. 20 A general load (plug load).

**Suitable for plenum use** – UL 2043 and Chicago rated for installation in air-handling plenum spaces. Fits into standard junction box housings.

**Dry contact input** – For UL 924 emergency or auxiliary input.

**Universal voltage** – 100-277 VAC.

**Choice of control protocol** – Can be controlled via DyNet or DMX512.

**Easy to install** – Plugs in RJ45 sockets and push down terminals.

**Flexible** – Control 0-10 V 100 mA Sink or Source and DALI broadcast. Guaranteed current 100 mA, Maximum 250 mA loads.

**Daisy chained devices** – Connect additional controllers and other SSA devices using dual RJ45 connectors or wire to spring terminals.

**Ordering Codes:**  
Refer to Single System Architecture Set-Up Guide for ordering codes.



## ULCx Preassembled DIN Rail Cabinets (UL)

A comprehensive range of lighting control solutions

This range of ready-to-deploy control solutions includes a variety of Dynalite DIN rail devices, installed and wired together inside a robust, wall-mountable steel cabinet.

Control options include 0-10V, DALI, forward/reverse-phase dimming, and relay switching. The addition of one or more network gateway cabinets provides powerful, secure connectivity and integration capabilities.

**Ready for immediate installation** – Eliminate the hassle of assembling cabinets in the field and save on installation and commissioning costs.

**Made in the USA** – Assembled, programmed, and tested in the factory to provide complete out-of-the-box functionality in a NEMA 1 rated enclosure.

**Fully scalable** – Connect any combination of cabinets to meet the requirements of even the most demanding projects in a single networked control system.

**0-10V/DALI Broadcast control** – Up to 24 control outputs per cabinet, individually configurable to 0-10V or DALI Broadcast.

**DALI-2 control** – Up to 3 DALI lines per cabinet with full support for addressing, tunable white, and RGBWAF\*, as well as an inbuilt DALI power supply and driver power management.

**Phase dimming control** – Up to 16 forward- or reverse-phase channels per cabinet.

**Relay switching control** – Up to 24 relay outputs per cabinet.

**Modular multipurpose control** – Populate up to 8 module bays per cabinet with any combination of forward/reverse-phase dimming, 1-10 V, DALI Broadcast, relay switching, and motorised curtain/blind control.

**RS-485 network gateway** – Connect optically isolated network spurs and enable a range of third-party integration options including AV systems, building automation, Modbus power meters, and DMX512 lighting.

**Ethernet gateway** – Enable LAN connectivity for commissioning and system management, an integrated web server for browser-based control and monitoring, and a huge range of enhanced functionality and integration options.



**ULC1 Dimensions (H x W x D)**  
310 x 370 x 91 mm (12 7/32 x 14 9/16 x 3 9/16 in)

**ULC2 Dimensions (H x W x D)**  
644 x 652 x 154 mm (25 1/32 x 25 43/64 x 6 1/16 in)

\*DDBC320-DALI only.

Cabinet part code	Cabinet type	Included Devices	12NC – Ordering Codes
DRC1220FR-GL-ENC	ULC 1	DDRC1220FR-GL	913703376209
DRC2420FR-GL-ENC	ULC 1	2 x DDRC1220FR-GL	913703376309
DBC1220-GL-ENC	ULC 1	DDBC1200, DDRC1220FR-GL	913703376009
DBC2420-GL-ENC	ULC 2	2 x DDBC1200, 2 x DDRC1220FR-GL	913703376109
DBC516FR-ENC	ULC 1	DDBC516FR	913703375909
DBC120-DALI-ENC	ULC 1	DDBC120-DALI	913703375709
DBC320-DALI-ENC	ULC 1	DDBC320-DALI	913703375809
DRPC802-ENC	ULC 1	DDMC802, 2 x DGTM402 modules	913703378709
DRPC1602-ENC	ULC 1	2 x DDMC802, 4 x DGTM402 modules	913703378909
DFPC802-ENC	ULC 1	DDMC802, 2 x DGLM402 modules	913703378809
DFPC1602-ENC	ULC 1	2 x DDMC802, 4 x DGLM402 modules	913703379009
DMPC802-ENC	ULC 1	DDMC802 (No modules fitted)	913703375309
DMPC1602-ENC	ULC 1	2 x DDMC802 (No modules fitted)	913703375409
DNG485-ENC	ULC 1	DDNG485, DSP10-15	913703376409
PDEG-ENC	ULC 1	PDEG, DSP10-15	913703379109
PDEG-S-ENC	ULC 1	PDDEG-S (BACnet Gateway)	913703376509

## Guestroom Kit

A thirteen-channel relay controller with two motion sensors and magnetic door switch

The Guestroom Kit is a feature-packed room control system with automated switched circuits, user interface inputs, and sensors to control power to the room based on real-time occupancy. Preconfiguration allows deployment without the need for commissioning software. Network support is built in, ensuring upgradability to a fully networked system. Every aspect of this device is designed to be feature-rich and cost-effective.

Automated real-time occupancy logic switches between occupied and unoccupied states to balance energy usage and guest comfort.

The controls can be added or retrofitted to any existing brand of lighting and HVAC, power outlets, and other switched electrical services.

**Real-time occupancy** – You can choose to keep the traditional key card slot or use sensors to automate room state changes, for energy savings you can count on. Welcome guests with automated lighting and air conditioning settings that retain preferences throughout their stay.

**Guest requests** – Capture Do Not Disturb (DND) and Make Up Room (MUR) requests for display outside of the room.

**Temperature display and settings** – Optional user interface to adjust temperature and fan speed through the Antumbra Display thermostat. The display dims when not in use for guest comfort overnight, waking up automatically as they approach.

**Seamless guest experience** – Simple, intuitive usability.

**Green mode** – Invite guests to opt in to greater energy savings for a more sustainable stay with Green mode.

**Energy management and sustainability** – Save energy without impacting guest comfort. More reliable way to conserve energy than traditional key card drops.

**Broad range of control** – Master lighting control plus native HVAC and power control are included as standard.

**Guest interfaces** – Clear, intuitive control with tactile feedback for lighting, power, and other key room services. Optional raised lettering aids accessibility for ADA rooms.

**Turnkey solution** – No programming or complex setup, making it easy to implement.



### System Components

#### DDRC-GRMS-E-GuestroomKit

A versatile room automation and energy management solution with two high-capacity 20 A relays and eleven general purpose 6 A relays. The controller has the capability to incorporate bridging functionality between an Ethernet LAN and connected DyNet devices.

#### DUS360CR-STR-Box1

Ceiling mounted recessed networked passive infrared occupancy sensor.

#### DUS360CR-STR-Box2

Ceiling mounted recessed networked passive infrared occupancy sensor.

#### RMDCS

Recessed magnetic reed switch and magnet mounted in the entrance door to detect door open/close state.

#### DDFCUC-STR-Box1

Fan coil unit controller, designed for direct connection to components commonly found in heating, ventilation, and air conditioning (HVAC) systems with fan coil units (FCU).

### Optional preconfigured devices

**DACM-Thermostat** DyNet communication module that connects to the PADPE-WW-L-STR-Thermostat.

**PADPE-WW-L-STR-Thermostat** Proximity detection and embedded temperature sensors. White polycarbonate finish with icon labelling and dynamic display.

### Optional devices

**Third-party user interfaces** Buttons with momentary switches are connected to the DDRC-GRMS-E dry contact inputs for manual lighting control. (DND, MUR, Master, Bathroom).

**PAXBLE-xx-L** AntumbraLite dry-contact user interface. Buttons are connected to the DDRC-GRMS-E dry contact inputs. Available with text and icon labelling in 2- to 6-button configurations with a range of colours and finishes.

**Card-drop facility** A dry contact card holder can be purchased from local electrical distributors for manually enabling power to the room. However, this option will decrease the reliability of energy savings.

### 12NC – Ordering Codes:

DDRC-GRMS-E-GuestroomKit	913703379209
DUS360CR-STR-Box1	913703373709
DUS360CR-STR-Box2	913703373809
DFCUC-STDR-Box1)*	913703373609
DACM-Thermostat*	913703251809
PADPE-WW-Thermostat*	913703093009

PAXBLE\* – for user interface design and ordering codes, refer to the Dyalite Design Studio

\* Optional

## Guestroom Kit Lite

A four-channel relay controller with two motion sensors and magnetic door switch.

The Guestroom Kit Lite is an ideal standalone entry point to automatic energy savings in the rooms. It provides automated switched circuits and sensors to control power to the room based on real-time occupancy.

Automated real-time occupancy logic switches between occupied and unoccupied states to balance energy usage and guest comfort. The controls can be added or retrofitted to any existing brand of lighting and HVAC, power outlets and other switched electrical services. Preconfiguration allows deployment without the need for commissioning software.

**Real-time occupancy** – Replaces the traditional key card slot with automatic room state changes, for energy savings you can count on.

**Turnkey solution** – No programming or complex setup, making it easy to implement.

**Minimal hardware requirements** – The kit and light switches provide all the required functionality. No other hardware is needed.

**Energy management and sustainability** – Save energy without impacting guest comfort. More reliable way to conserve energy than traditional key card drops.

**Broad range of control** – Master lighting control plus native HVAC and power control are included as standard.

**Retain existing mechanical light switches** – Light switches can still be used to control power to the lighting circuits in each room.

### 12NC – Ordering Codes:

DDRC420FR-GuestroomKitLite	913703252209
DUS360CR-STR-Box1	913703373709
DUS360CR-STR-Box2	913703373809
Third-party light switches	Not supplied by Dyalite



### System Components Preconfigured devices:

**DDRC420FR-GuestroomKitLite** Independent switching of four feed-through relay channels up to 20 A each.

#### DUS360CR-STR-Box1

Ceiling mounted recessed networked passive infrared occupancy sensor.

#### DUS360CR-STR-Box2

Ceiling mounted recessed networked passive infrared occupancy sensor.

#### RMDCS

Recessed magnetic reed switch and magnet mounted in the entrance door to detect door open/close state.

# Retail

## Store Kit Mini

A pre configured control system for small to medium sized stores.

The Store Kit Mini control system is tuned to the needs of small to medium sized stores. It offers scene management and energy saving via an easy to install and configure kit. As it consists of pre-configured Dynalite lighting controls components there is no need to involve a commissioning technician. The Antumbra Display offers a simple and intuitive interface for both control and scene configuration. The system can be extended with a dry contact interface to connect third-party switches, external BMS scheduler, and alarms to the lighting system.

**Easy to install** – out of the box solution with pre-configured building blocks).

**4 configurable scenes** – 4 DALI dimmable zones, 2 ON/OFF zones.

**Antumbra Display interface** – Additional Antumbra Display or Button interfaces possible.

**Language setting** – via DIP switch (English, French, Italian, Spanish, German, Polish, Russian).

**Pin code protected** – configuration menu.

**Optional BMS integration** – for local system override via dry contact interface.

**External scheduler and alarm** – system integration

**Kit components** –  
 DDBC1200 CFIAR MINI  
 DDBC1200 CFIAR MINI S  
 DDRC420FR CFIAR MINI  
 DACM CFIAR MINI  
 DDMIDC8 CFIAR MINI

**Notes**

The Antumbra Display is not part of the Store Kit Mini code due to several configuration options. Therefore, it should always be ordered separately. Minimum 1 Antumbra Display is needed for the system to work. Additional interfaces can be both Antumbra Display or Antumbra Button (4 button interface).

**12NC – Ordering Code:**  
 Store Kit Mini 913703355609



Refer to the Store Flex System Guide to order optional components.

## Store Kit

An easy-to-install and operate system for retail stores

Store Kit offers scene management and energy saving for retail stores. It is an advanced lighting controls system that is simple to install and to operate. As it consists of pre-configured Dynalite lighting controls components there is no need to involve a commissioning technician. Once installed and configured the dedicated software sets up a fully operational system automatically.

There are 2 kits available:

**Store Kit Touchscreen** – with a wall mounted touchscreen user interface.

**Store Kit Gateway** – with a gateway allowing control of the lighting directly from any customer smart devices via a browser-based app.

**Easy to install** – out of the box solution.

**Web app optimised** for tablet devices.

**3 areas** – Sales-floor, Back-of-house and Outdoor.

**Universal voltage** – 100-277 VAC.

**Multiple dim and relay channels** per area.

**33 configurable scenes**

**Automated configurable schedules**

**Additional sensors** – Possibility to add occupancy sensors to automatically control the lighting in back-of-house.

**BMS integration** and temporally local override.

**Upgradable** – to Multisite system.

**Kit components** –  
 PDTS CFIAR or PDEG CFIAR CE  
 DDBC1200 CFIAR P  
 DDBC1200 CFIAR S  
 DDRC1220FR-GL CFIAR CE  
 DDMIDC8 CFIAR CE  
 DUS360CR-DA CFIAR  
 Store Control App

**12NC – Ordering Codes:**

Store Kit – Gateway	913703246409
Store Kit – Touchscreen	913703020909

Refer to the Store Flex System Guide to order optional components.



## Store Flex

A complete system for Food and Large Retail

Store Flex is a system proposition for Food and Large Retail, especially supporting retailers with a larger number of stores. It is a complete lighting solution with basic and advanced features and functions to suit any store size.

**Offers lighting control functionality** that is tailored to the needs of the customer.

**Can be applied in all store formats** with primary focus towards the supermarket and hypermarket segment.

**Control multiple areas** – The system can be used to control the lighting in the sales area, back-of-house and outdoor area.

**Add occupancy sensors** to automatically control the lighting in each area or zone.

**Includes a gateway** enabling the Store Control App to control and configure the lighting directly from customer mobile devices via a browser-based user interface (UI). Alternatively, a wall-mounted touchscreen user interface can also be used to control the lighting and set schedules.

**Possibility to extend wired Store Flex** by using the Zigbee PRO standard to establish a wireless mesh network between a PDZG-E wireless gateway and its associated devices (Areas or zones can be hybrid, consisting of wired and wireless nodes)

- Integrates Interact Ready wireless luminaires, equipped with wireless drivers.
- Capable of Wireless Group Control (WGC) when using a SNS441 IA transceiver connected to a DALI Extender or SR Bridge to control luminaires via DALI broadcast.

**32 configurable scenes** control up to 48 zones in a mixed setup with no functional limitations:

- DALI (both Broadcast and Addressable)
- On/Off relay switching
- 0-10 V/1-10 V dimming
- Phase cut dimming
- DMX (for example to control RGB lighting)

**Notes** – Expert knowledge is required for offsite preparation and onsite commissioning.

**12NC – Ordering Code:**  
 SW913705110003



# Demonstration

## PD-KoD DALI Demo Case

### Discover the power of DyNet and DALI

This compact, portable device provides a simulated multi-universe DALI lighting control network for training and education purposes, incorporating both DALI and DyNet sensors and UIs.

Integrated DyNet and DALI terminals allow the connection of additional drivers, sensors, gateways, controllers, and UIs to simulate various control scenarios.

**DDBC320-DALI controller** – Delivers the combined power of three DALI universes and full DyNet functionality to simulate real-world lighting and control scenarios.

**Realistic office floor plan** – 40 embedded LEDs across two universes provide a combination of DALI 207, DALI 209 Tunable White, and DALI 209 RGBW control.

**External DALI bus** – Connect and control a full DALI universe, including drivers, sensors, and UIs

**Antumbra & Revolution UIs** – Simulate morning/afternoon/evening modes, control lighting scenes, and monitor temperature, humidity, and light levels in real time.

**DyNet & DALI multifunction sensors** – Demonstrate the power of automated systems to respond dynamically to occupancy and lighting changes.

**Lamp override and UL924 toggles** – Demonstrate the system response to lamp failures and emergency events.

**24 hour simulation** – use Antumbra Display to trigger morning/afternoon/evening modes

**Dimensions:**  
(Closed - H x W x D) 161 x 430 x 380 mm  
(6.34 x 16.93 x 14.96 in)

**12NC – Ordering Code:**  
PD-KoD 913703335009



## UI Demo box

### Easy to carry demonstration box for eight UIs

The User Interface demonstration box is worthy of both Antumbra and Revolution's sleek aesthetics. Each box contains room for eight user interfaces of the same format (either EU or NA).

Lightweight and portable, the leather handle makes carrying the case a breeze while foam inserts hold the UIs securely in place. The user interfaces must be ordered separately, allowing sales teams to select precisely what devices, button labelling, and finishes to showcase.

**Note:** The demo box does not allow for the UI to be powered.

**Dimensions:**  
260 x 350 x 170 mm (10.24 x 13.78 x 6.691 in)

**12NC – Ordering Codes:**

PD-UIA-DEMOBOX	913703378609
PD-UIE-DEMOBOX	913703378509



## PD-KoD-TC DALI Mini Training Case

### Discover the power of DyNet and DALI

This compact, portable device provides a simulated single-universe DALI lighting control network for training and education purposes, incorporating an Antumbra Display UI, DALI sensor, and dry contact user inputs.

Integrated DyNet and DALI terminals allow the connection of additional drivers, sensors, gateways, controllers, and UIs to simulate various control scenarios.

**DDBC120-DALI controller** – Delivers the combined power of DALI and DyNet functionality to simulate real-world lighting and control scenarios.

**Realistic floor plan** – 37 embedded LEDs provide a simulation of DALI dimming control.

**External DALI terminal** – Extend the inbuilt DALI universe with additional drivers, sensors, and UIs.

**Antumbra Display UI** – Simulate lighting scenes and monitor temperature and light levels in real time.

**DALI multifunction sensor** – Demonstrate the power of automated systems to respond dynamically to occupancy and lighting changes.

**DPMI940-D dry contact interface** – Two configurable momentary switches provide direct control via the DALI bus.

**Dimensions:**  
(Closed - H x W x D) 90 x 210 x 130 mm (3.54 x 8.27 x 5.12 in)

**12NC – Ordering Code:**  
Product PD-KoD-TC 913703351509

**12NC – Accessories**

DTK622-USB (USB PC Node)	913703090209
DTK622-232 (Serial Port Node)	913703090109



## UI Demo board

### All-in-one UI demonstration board

The User Interface demonstration board provides an easily transportable all-in-one showcase of Dynalite Antumbra and Revolution button panel UIs and finishes. Use the board as a basic display or add communication and power modules for live demonstrations.

**Dimensions:**  
530 x 605 x 360 mm (20.80 x 23.80 x 14.20 in)

**12NC – Ordering Codes:**

PD-UI-EU-DemoBoard	913703355109
PD-UI-NA-DemoBoard	913703372409



## Network Accessories

### DDNP1501 Network Power Supply

#### Supplements DyNet network DC supply

The Dyalite DDNP1501 is a 15 VDC 1.5 A regulated power supply that supplements the DyNet network DC supply and provides a convenient RJ12 port for commissioning the Dyalite system.

**No manual selection required** – The switch-mode design allows the device to be used with a range of input voltages.

**Used when high consumption devices are employed** – The DyNet network is self-powered via built-in DC supplies integrated within all mains-powered devices. Use of high-consumption devices, such as edge-lit touchscreens, can necessitate a requirement for additional power.

**Flexible mounting solution** – A DIN-rail mountable device, with a circuit breaker profile designed to be installed into all types of distribution board enclosures, including those with cover apertures specifically designed for circuit breakers.

**Front-facing RJ12 port** – Provides a convenient connection point to the DyNet RS-485 bus for commissioning engineers using a laptop and PC node.

**Dimensions:**  
95 x 108 x 64 mm (3.74 x 4.25 x 2.52 in)

**12NC – Ordering Code:**  
913703130509



### DDTC001 Timeclock

#### Astronomical 365-day timeclock

The Dyalite DDTC001 timeclock provides a tamper resistant solution for time-based event control on a DyNet network.

**Remote programming** – The device is programmed via a PC and there are no external controls available, providing a tamper resistant solution.

**Advanced clock controls** – Features sunrise/sunset tracking and automatic adjustment for daylight saving.

**Performs as an energy management controller** – Uses powerful macro and conditional logic functions to provide full automation of large commercial projects, where automatic lighting events are required at predetermined times.

**Flexible mounting solution** – DIN-rail mounted device, designed to be installed into a distribution board.

**Dimensions:**  
86 x 35 x 58 mm ( 3.34 x 1.38 x 2.28 in)

**12NC – Ordering Code:**  
913703074009



# Connectivity Accessories

## PD-PCN USB PC Node

### PC connection node

The Dynalite PD-PCN provides a USB connection from your PC to the Dynalite system.

**Useful interface for any Windows PC** – Provides complete access to all network messages present on the DyNet network.

**Commissioning and maintenance tool** – Can be used in conjunction with Dynalite System Builder to commission, configure, and diagnose Dynalite devices.

**Versatile mounting** – Robust housing includes cable tie attachment points for easy installation onto server racks or other IT infrastructure.

**Easy network connection** – Included PDC-DINGUS-UI accessory with screw terminal and RJ12 ports enables commissioning techs to tap into an existing network and maintain connection to all devices.

**Reliable PC connection** – Can be used as a permanent gateway to the system for the Dynalite System Manager head-end software.

**Optical isolation** – Separation of USB and RS-485 interfaces protects connected devices from accidental damage or data loss caused by an electrical fault on the other side.

**Dimensions:**  
70 x 70 x 24 mm (2.76 x 2.76 x 0.94 in)

**12NC – Ordering Code:**  
913703380709



## PD-232N RS-232 PC Node

### Serial port connection node

The Dynalite PD-232N is a network gateway that provides passive integration to a PC or RS-232 system.

**Full duplex integration** – Useful for linking a Dynalite system with an AV or HVAC system that supports passive RS-232.

**Versatile mounting** – Robust housing includes cable tie attachment points for easy installation onto server racks or other IT infrastructure.

**Dimensions:**  
76 x 70 x 24 mm (3.0 x 2.76 x 0.94 in)

**12NC – Ordering Code:**  
913703098409



## Dingus Connectors

Name	Description	12NC – Ordering Code
<b>DACM-DINGUS-RJ12</b> D-DACM-DINGUS-RJ12-QTY10	5-way plug with 2 x RJ12 (top entry) designed for user interfaces. Same as DUS-DINGUS but with a Shield wire.	913703255209
<b>DACM-DINGUS-RJ45</b> D-DACM-DINGUS-RJ45-QTY10	5-way plug with 2 x RJ45 (top entry) designed for user interfaces. Same as DUS-DINGUS but with a Shield wire.	913703254809
<b>DUS-DINGUS-RJ12</b> D-DUS-DINGUS-RJ12-QTY10	5-way plug with 2 x RJ12 (top entry) designed for DyNet sensors.	913703254409
<b>DUS-DINGUS-RJ45</b> D-DUS-DINGUS-RJ45-QTY10	5-way plug with 2 x RJ45 (top entry) designed for DyNet sensors.	913703254609
<b>DINGUS-DMC-UL</b> DINGUS-DMC-UL	5-way plug with 2 x RJ45 socket (side entry facing left) to connect to DCM-DyNet module in the DMC2 and DMC4 load controllers.	913703064209
<b>DINGUS-UI</b> DC-DINGUS-UI-QTY10	5-way socket and plug with 1 x RJ45 and 1 x RJ12 socket. Inserted between the DACM and the PC Node. It enables RS-485 network continuity whilst providing commissioning access. Supplied with the PD-PCN (USB PC Node)	913703255009

## DyNet-STP-CABLE-LSZH Cat 5e Cable

### 100 MHz 100 Ω STP 4 pair Cat 5e

DyNet data cable is specifically designed for high reliability RS-485 network wiring. In addition to a twisted pair for RS-485 data, conductors are provided to supply DC power to network powered devices.

**Overall shield for maximum data integrity** – The data cable is flexible and all conductors are stranded.

**Fast termination** – Designed for robust termination into pressure-plate style terminals.

**Extra thick outer jacket** – Mains rated for use in distribution boards.

Supplied in 305 meter roll.

**Dimensions:**  
Cable length: 305 m (1000.61 ft)

**12NC – Ordering Code:**  
913703898809



## DyNet-SFLAT6-CABLE Flat Cable

### Cable roll and cable kits for faster installation

Flat data cable is specifically designed for high reliability localized network wiring. In addition to a conductor pair for data, conductors are provided to supply DC power to network powered devices.

**Overall shield for maximum data integrity** – The data cable is flexible and all conductors are stranded.

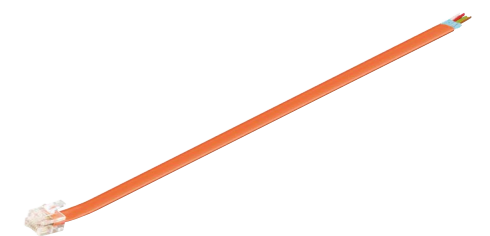
**Fast termination** – Designed for rapid crimp termination into RJ12 plugs for use with Dynalite products supporting RJ12 sockets.

**Supply options** – Available in 200 m (656.17 ft) rolls or in pre-terminated leads of 0.5, 5 and 10 m (1.64, 16.40 and 32.81 ft) lengths.

**Utilize DDPB22-RJ12 network junction box for faster installation** – Facilitates termination of 22 DyNet flat cables in one location.

**12NC – Ordering Codes:**

200 m (656.17 ft) roll	913703095009
10 m (32.81 ft) lead	913703898909
5 m (16.40 ft) lead	913703899009
0.5 m (1.64 ft) lead	913703899109



# Mounting Accessories

## PAEFE Antumbra Electrical Frames

### Power, data, and audiovisual wiring frames

Stylish wiring solutions for any project.

Dynalite has partnered with Simon Electric to exclusively provide the perfect combination of power and connectivity options for a complete project offering.

Our frames, available in one- to four-gang sizes, are designed to match Antumbra European panels in size and color.

**Antumbra styling** – Designed to match the Antumbra range of user interfaces for a consistent look and feel throughout your project.

**Designed to pair with any electrical module from the Simon Electric V8 range** – Mains outlets, networking ports, audiovisual connectors, room status indicators, doorbells, and more.

**Range of frame sizes** – Holds any combination of one to four modules per frame.

**Dimensions:**  
 88 x 88 x 5 mm (3.46 x 3.46 x 0.20 in)  
 176 x 88 x 5 mm (6.93 x 3.46 x 0.20 in)  
 264 x 88 x 5 mm (10.39 x 3.46 x 0.20 in)  
 352 x 88 x 5 mm (13.86 x 3.46 x 0.20 in)

**Décor-matching options** – Frames and modules are available in a range of attractive metallic finishes.

#### 12NC – Ordering Codes:



Metal Frame Plastic Rim & Inset	Aluminium White	Gold White	Jet Grey Black	Noir Black	Prestige White	Vintage Black
	913703062109	913703064609	913703061909	913703061709	913703064509	913703061809
	913703065109	913703070709	913703064909	913703064709	913703070609	913703064809
	913703071609	913703071809	913703071509	913703070809	913703071709	913703070909
	913703072509	913703072709	913703072409	913703072209	913703072609	913703072309

## DH2X24 DIN Rail Enclosure

### Safe, flexible housing for DIN rail devices

The Dynalite DH2X24 is a wall-mounted enclosure with two 24-unit DIN rails, designed for easy mounting and housing of Dynalite DIN rail products. The enclosure includes a removable front cover, removable DIN rail plate, and a variety of cabling knockouts along the side, top and bottom for safe and convenient installation.

**Galvanized steel body** – Extremely durable construction, designed to keep housed devices safe.

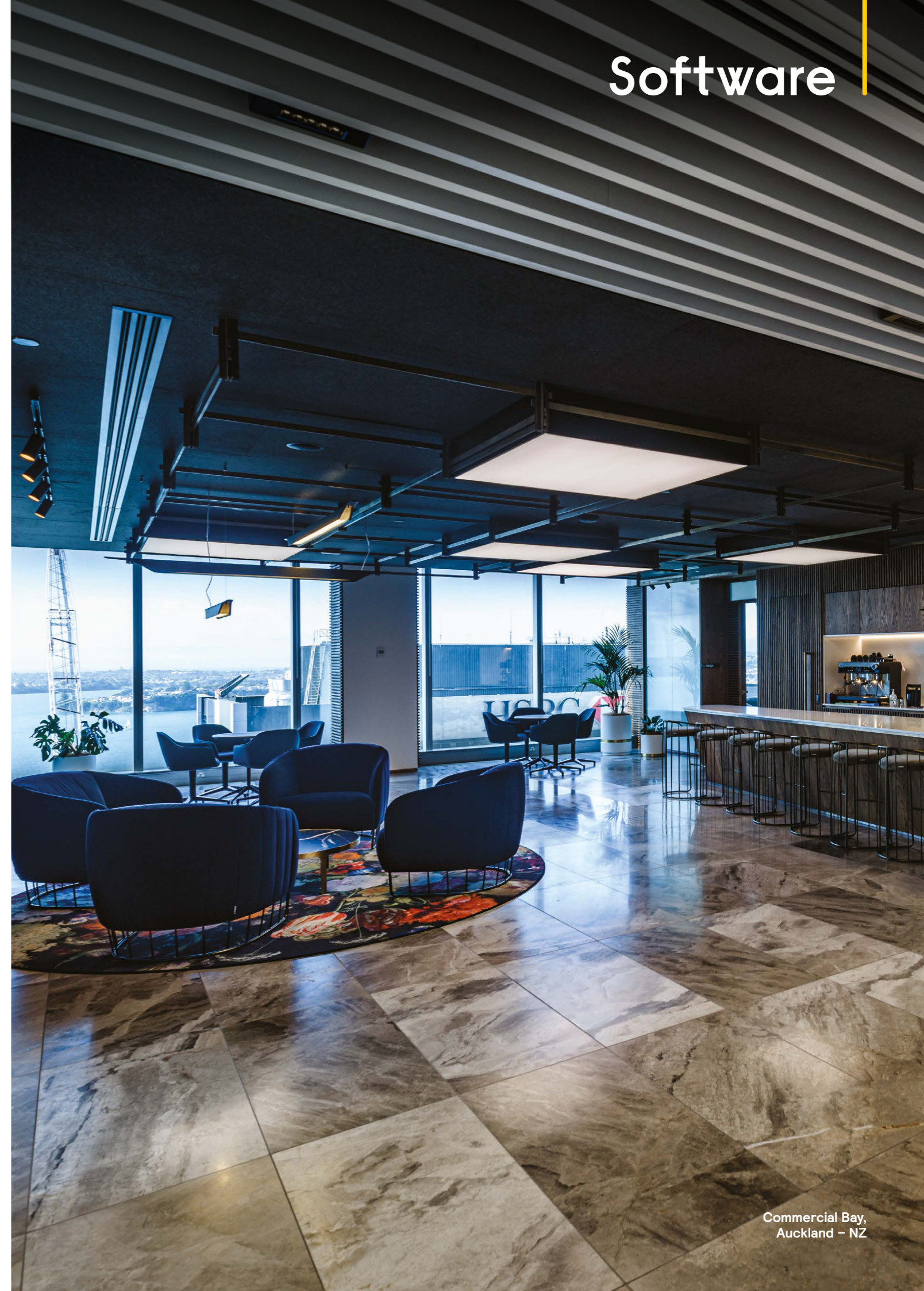
**Dimensions:**  
 410 x 494 x 107 mm (16.14 x 19.45 x 4.21 in)

**Passive cooling** – Sufficient ventilation to accommodate any combination of Dynalite DIN rail dimming controllers at up to 70% of their rated loads.

**12NC – Ordering Code:**  
 913703339909

**Removable DIN rail plate** – Allows you to mount devices outside of the enclosure, or run wiring behind the plate to maintain segregation.

**Designed to hold up to four 12-unit DIN rail devices** – or any combination of smaller devices, up to 24 units per rail.



# Pro Workflow

## Dynalite System Builder

### Fast and efficient lighting control system set-up

Designed with the system installer and integrator in mind, System Builder is a comprehensive platform from Dynalite. This user-friendly and intuitive application sets a new benchmark for efficient lighting control system set-up.

**New and improved set-up templates** – Provides a simple and intuitive interface for access to advanced system functionality, allowing flexibility to modify, customize or create specific tasks if required.

**Faster commissioning times** – Includes a series of common device settings based on typical lighting control scenarios. Tailor to your project, save and replicate across other sites as required.

**Virtual panel** – Control any area of the system directly, run sequences and test final operations.

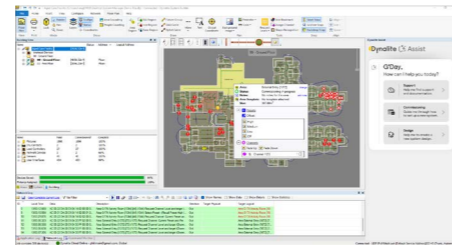
**Complex functionality made simple** – Manage logical grouping of lamps and other system hardware elements using simple graphical representations.

**Maintenance made easy** – Print out project floor plans with fixture details, including DALI addresses, to facilitate maintenance planning.

**Live data details** – The status of each lamp is visually represented using icons, which change color to reflect current lighting levels.

**Monitor the whole system** – Inbuilt network monitor details and logs all Dynalite network traffic, as well as DALI network traffic.

**Dynalite Assist** – Ask our friendly online AI support assistant for help with products, specifications, case studies, commissioning advice, and information from any Dynalite documentation.



**Ordering:**  
Dynalite System Builder is available for authorised users on the technical support website [www.dynalite.com](http://www.dynalite.com)

## Dynalite System Manager

### System control, monitoring and management

Dynalite System Manager is a multi-user control system management and monitoring software tool. It provides users with full visibility of the lighting and energy management system status and performance, while enabling simple local or global system adjustments.

**Complete control** – Initiate system changes, from a single lamp to the lighting state of an entire multi-story building, with a single mouse click.

**Simple scheduling** – Intuitive tools enable the user to schedule and manage events such as 'office space to day mode' or 'car parks to after-hours security mode' with ease.

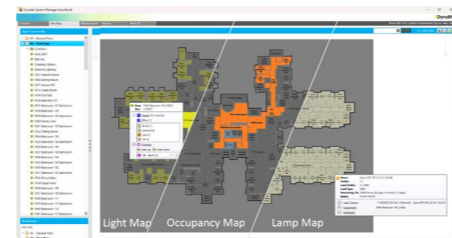
**Easy integration** – Integration tools allow the user to manage more than just lighting. OPC DA/AE, OPC UA, HVAC, motorised window shades and other systems are accessible through System Manager.

**Manage routine maintenance** – Full support of maintenance functions means that routine tasks can be undertaken without the involvement of a system specialist. Faults are automatically flagged for attention, ensuring that the facility continues to function and operational downtime is minimized.

**Strike the balance** – Alternate energy management schemes can be initiated automatically or manually, as required. This allows facility managers to balance energy efficiency with the needs of the occupants and can be initiated on either a tenancy or building-wide basis.

**Identify energy-saving initiatives based on current use** – The energy dashboard presents live data as simple visual displays. It mines raw data for analysis, to both establish a benchmark for future improvements and pinpoint exactly where energy is being used.

**Tailored control of individual light fittings** – The optional desktop app resides in the task bar of a user's computer and allows task lighting to be tailored to the user's individual preferences. Linking PC usage to the lighting control system ensures lights are not left on unnecessarily.



**Ordering Code:**  
12NC – SW913703089909

#### OPC UA License

System Manager OPC-UA	100 point license	SW913703370109
System Manager OPC-UA	1k point license	SW913703370209
System Manager OPC-UA	5k Point license	SW913703370309
System Manager OPC-UA	10k Point license	SW913703370409

## Dynalite Multiroom System Manager

### Enhance experiences and maximise efficiency across your whole property.

Multi-user monitoring and management tools for room-centric properties including hotels, resorts, managed residential and senior living.

**Real-Time Visibility & Control** – Remotely monitor and control all services and spaces across your property from a single unified view. Rooms, residences, outlets, facilities, and exteriors are logically arranged for intuitive access, while multi-building scalability supports larger and distributed developments.

**Occupancy, Schedules & Seasons** – Use real-time occupancy in rooms and residences to deliver reliable automated energy savings without impacting comfort. Automatically transition between states throughout the day with schedules, and across the year with seasonality.

**Integrations & Connectivity** – Our secure APIs enable next generation user interfaces including apps, tablets, IPTV, and voice control for personalised convenience. Automation of energy savings, comfort, and the assignment of alerts and tasks is possible through our certified integrations with property management, access control, and operations systems.

**Proactive Monitoring & Alerts** – Protect your assets and ensure optimal experiences with monitoring and alerts. Easily define safe condition ranges and elapsed times, then receive proactive alerts whenever thresholds are exceeded.

**Historical & Energy Reporting** – Access rich historical data and compare dates or areas to understand behaviours, performance, and requests. View energy consumption categorised by lighting, power, or HVAC for a building, floor, or single room/space, filtered by date or unique stay.

**Security & User Permissions** – With end-to-end encryption across the network and the database, your data is always secure. Single sign-on helps to ensure that logins are always policy-compliant, while profile-based permissions allow users to access only the features or areas of the property they need.

**Self-Management Tools** – Self-manage settings and defaults for your property. Templated updates enable automated deployment of systemwide changes.



**Ordering:**  
Projects must follow the Multiroom commissioning process.

Multiroom System Manager License (Standard) SW913703029509

Multiroom System Manager License (Advanced) SW913703029909

## PDTS UI Creator

### Custom controls for your touchscreen project

With an intuitive drag-and-drop interface, Dynalite UI Creator empowers commissioning engineers to easily build screens and menus with the required functions, controls, and branding for any project. Customise any page with buttons, sliders, text, graphic elements, and more to provide users with a seamless experience of the Dynalite system.

**Quick Start Wizard** – Import project data from Dynalite System Builder to create a full-featured control UI with just a few mouse clicks.

**Intuitive drag-and-drop interface** – Add and arrange controls, text elements, images, indicators, and more.

**Simple configuration menus** – Customise the appearance and functionality of any page, element, or control with ease.

**Access control** – PIN code logins protect your touchscreen from unauthorised access when located in a public area.

**Images and backgrounds** – Add full-colour branding and logos, decorative elements, or even helpful instructions for new users.

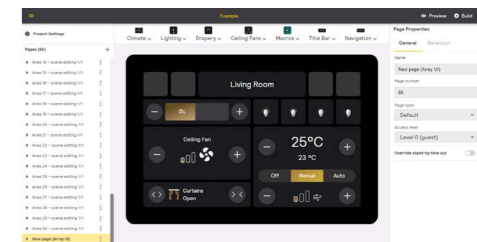
**Time and date** – Show the current time and/or date on any page with adjustable fonts, sizes, and colours.

**Buttons** – Recall scenes, navigate between pages, and trigger advanced tasking functions within the PDTS. You can even place invisible buttons over a background floor plan for intuitive navigation to each room or area page.

**Sliders** – Adjust light and tuneable white levels for individual lighting groups.

**Status indicators** – Provide at-a-glance confirmation of active presets in any area.

**Environmental indicators and controls** – Add temperature and humidity readouts, with optional HVAC controls to adjust the temperature setpoint.



**Ordering:**  
UI Creator can be downloaded for free from [support.dynalite.com](http://support.dynalite.com), or via your Dynalite partner or Signify representative.

# Mobile Apps

## Dynalite Switch App

### Intuitive mobile interface

The Dynalite Switch app provides both Apple and Android devices with intelligent control of the Dynalite system in both residential and commercial applications.

Wrapped in a modern and intuitive user interface, this app enables you to manage scenes, apply schedules, and control individual channels as well as fans, climate functions, and motorised window coverings.

**Plug-and-play** – Connect the mobile app to the Dynalite system and it's ready to use.

**Scene management** – Recall and edit predefined lighting scenes.

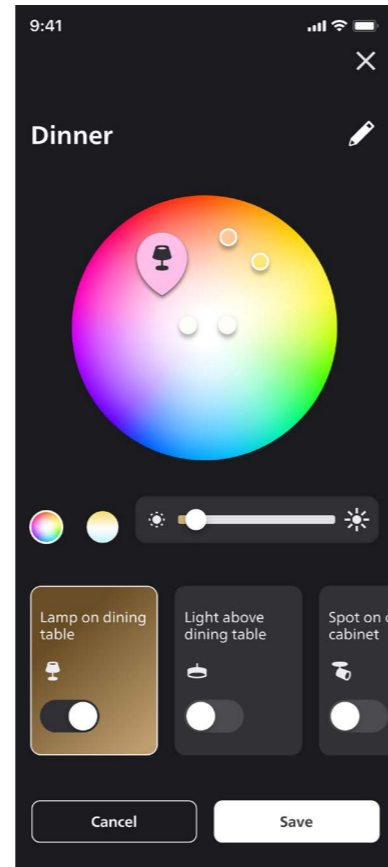
**Climate controls** – View current temperature and relative humidity, control fan speeds, and adjust the temperature setpoint.

**Lighting control** – Easily adjust individual lighting channels.

**Scene scheduling** – Trigger lighting scenes based on a schedule.

**Simple connection** – Connect to a Dynalite Ethernet gateway via your local Wi-Fi network.

**Ordering:**  
Available free of charge from the Apple or Google Play app store.



## Dynalite EnvisionTouch

### Intuitive and effortless control

The Dynalite Self-configuring Mobile App provides intelligent system control via an iOS or Android hand-held device. Suited to both residential and commercial control applications, multiple integrated systems can be easily controlled with single preset scenarios such as 'Welcome Home' or 'After Hours'.

**Self-configuring application** – Standardized templates and functionality reduce commissioning and installation time.

**Effortless control** – Users can view current system status and make adjustments to lighting, HVAC, blinds and other equipment connected to the Dynalite control network.

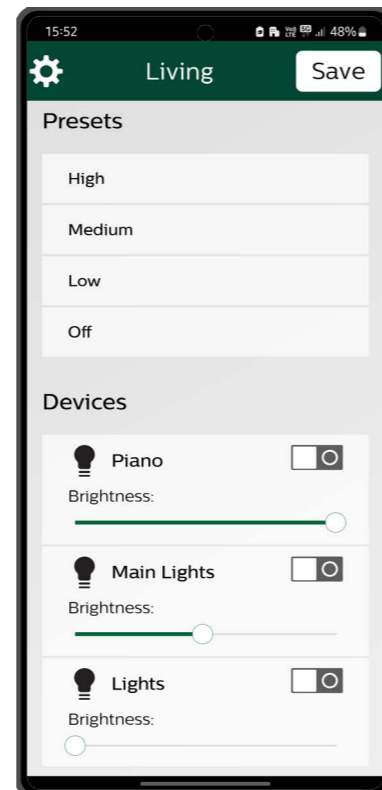
**Control individual lighting channels** – Adjust standard light sources via sliders, with an option to control tunable white fixtures and RGB color settings.

**Single-click control** – Recall predefined user preferences for lighting, blinds, heating and entertainment systems.

**Available for iOS and Android** – Works on iPhone, iPad, iPad Mini, iPod Touch and a range of Android phones and tablet devices.

**Simple Ethernet connection** – Requires a Dynalite Ethernet Gateway and a WiFi router to connect to a Dynalite System.

**Ordering:**  
Search the iOS App Store or Google Play Store for Dynalite.



# Dynalite Cloud

## Dynalite Cloud Platform

Cloud-based lighting control system services – remote commissioning and connectivity

Dynalite Cloud provides a version-controlled cloud-based project file repository and secure remote connectivity between Dynalite System Builder commissioning software and a Dynalite system via an on-site PDDEG-S network gateway.

**Software Overview** – The Dynalite Cloud Platform offers a range of online software services including the ability to store and share project files in the cloud, enabling online administration, multi-user commissioning with different authorisation levels, revision control, and backup.

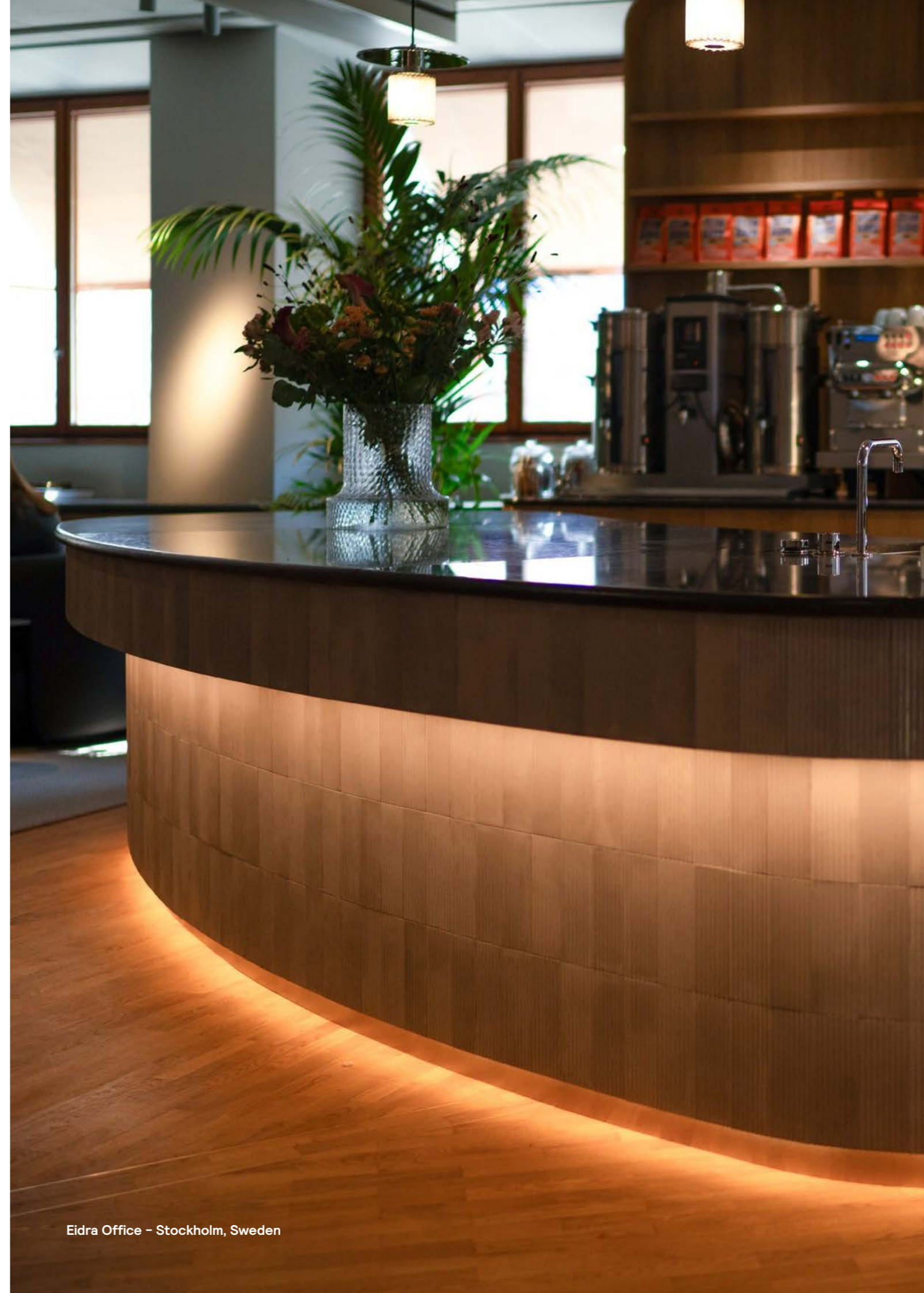
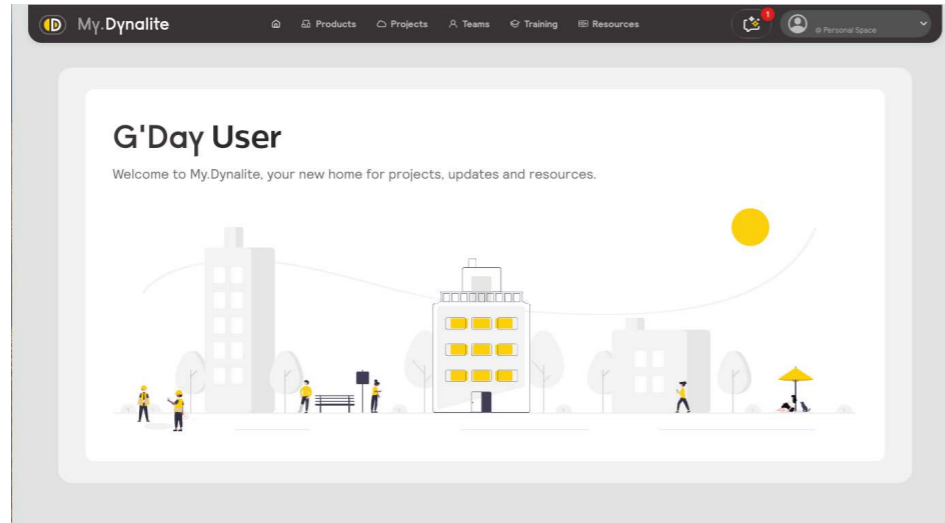
Further, it reduces the need for site visits by providing all System Builder features via a secure remote connection to project sites.

The Dynalite Cloud Platform (DCP) consists of the following elements:

- Dynalite Cloud Portal (Web browser access)
- Dynalite Cloud Projects (System Builder project file storage)
- Dynalite Cloud Connect (System Builder remote connectivity)

**12NC – Ordering Dynalite Cloud**

**Subscription Code:** SW913703253809



Eidra Office – Stockholm, Sweden



To learn more about our control solutions  
visit [dynalite.com](https://www.dynalite.com)

[www.dynalite.com](https://www.dynalite.com)

© 2026 Signify Holding. All rights reserved. Specifications are subject to change without notice. No representation or warranty as to the accuracy or completeness of the information included herein is given and any liability for any action in reliance thereon is disclaimed. Dynalite and Signify Dynalite are registered trademarks of Signify Holding. All other trademarks are owned by Signify Holding or their respective owners. Data subject to change.