



©signify
Dynalite

Emergency Lighting Control Solutions

A simple, scalable architecture for monitoring
and managing DALI emergency lighting installations

Emergency lighting management

Networked lighting controls are essential for effective emergency lighting installations.

The Dynalite control solution provides a range of monitoring and maintenance tools to aid facility engineers with their regular testing and support them to procure that emergency lights function correctly around the clock.

“ Dynalite offers a simple, scalable network architecture designed to provide a complete DALI emergency lighting control solution for a wide variety of building areas. ”

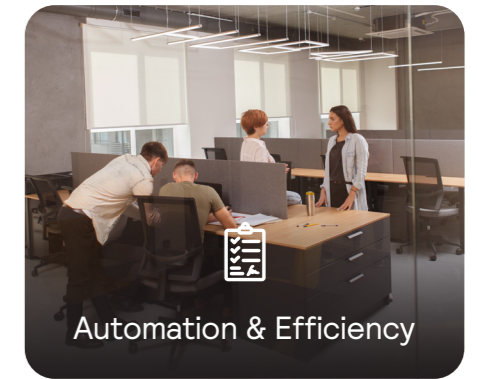
Our Capabilities



We enable users to create different lighting scenes to suit a variety of tasks and occasions, schedule those scenes to occur automatically or via a manual trigger, sort luminaires into functional groups and then reassign those luminaires to different areas as the needs of a space change, and much more.



Creating tailored experiences that align with individual and environmental needs
Through circadian lighting, our system supports natural day rhythms to promote health and wellbeing, while also offering climate control for optimal comfort.



Balancing operational efficiency, energy management, and occupant comfort
Our system leverages dynamic automations to minimize energy consumption by adapting to routines, occupancy patterns, natural light levels, and more, all while ensuring a balanced response that prioritizes user comfort.



Built on open standards, our system complies with a wide range of international certifications, including RCM, CE, UL/cUL, UKCA, and China RoHS, ensuring global applicability. We also support adherence to key global building standards like BREEAM, LEED, and WELL, making Dynalite a trusted choice for sustainable and future-ready projects.



Highly customizable and adaptable lighting control solutions for projects of any size or complexity
From small standalone shops to iconic landmarks like the Burj Khalifa or expansive multi-building campuses, our system's near-infinite scalability can meet the needs of any application.



Our forward-looking and backwards-compatible approach means no Dynalite device or project is ever left behind, with buildings still operating today on systems installed 20-30 years ago. This backwards compatibility simplifies maintenance and ensures long-term value for our stakeholders.

Key application areas



Scalable emergency system controls for all building environments

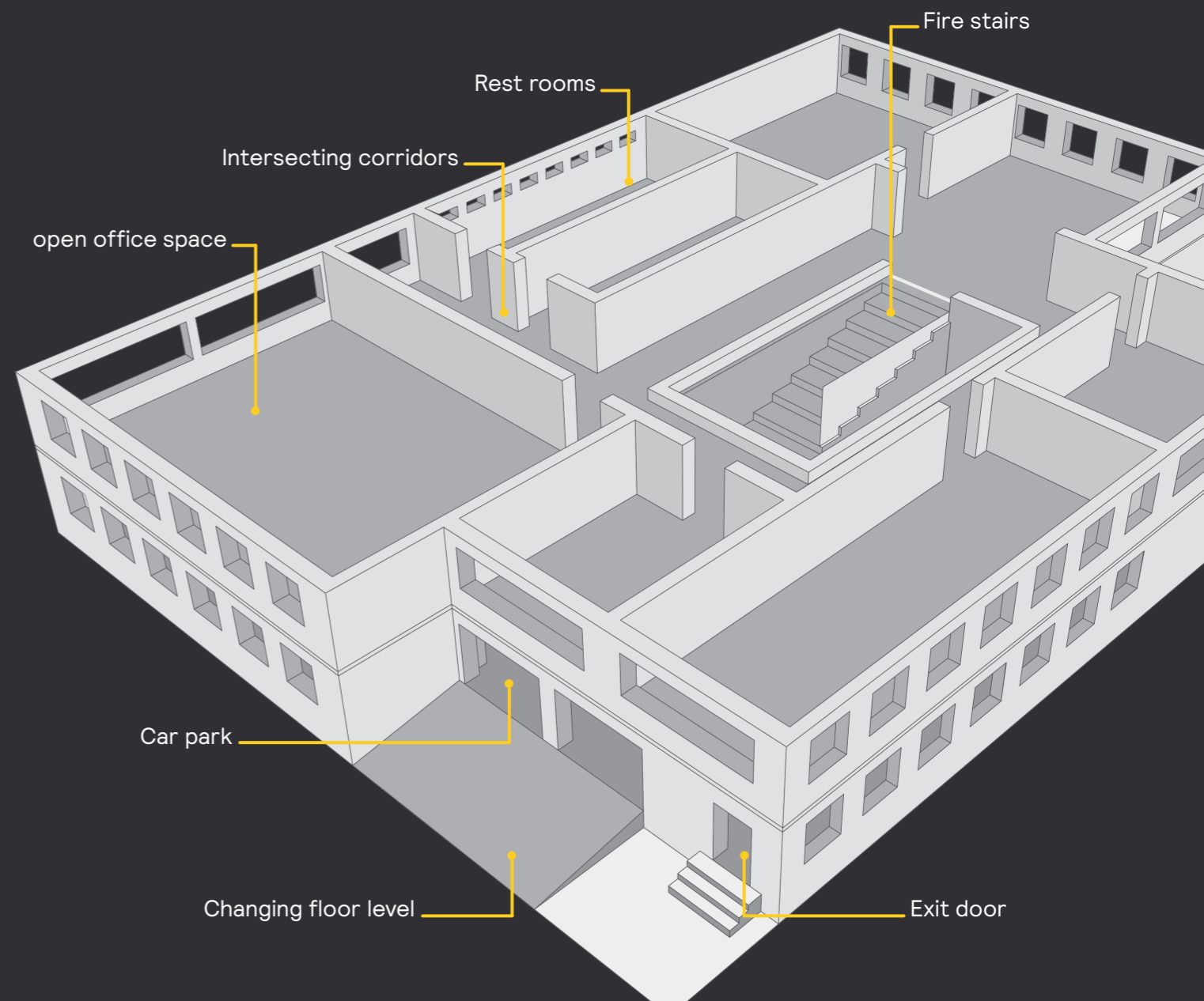
The Dynalite system is a flexible and scalable control platform that connects a range of intelligent network devices to create a complete control solution.

Operational and system status information is passed to all devices over an RS-485 or Ethernet network using the DyNet protocol.

DyNet can link multiple DALI networks together seamlessly to reach the required scale of any project. The system is application agnostic and has been proven in over 35,000 projects around the world, including a variety of retail, hospitality, office, industry, and public building projects.

The control system's compatibility with DALI emergency luminaires supports facility managers in monitoring, managing, and maintaining their emergency lighting system.

Automated testing of all connected emergency and non-emergency fittings can be scheduled and configured by the building's facility management team using Philips Dynalite's head-end software, System Manager.

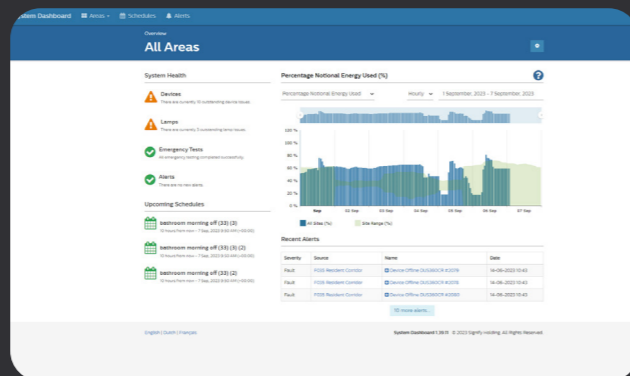


Control system features

System Manager's feature set provides facility engineers with the ability to optimise the health of their emergency lighting system.

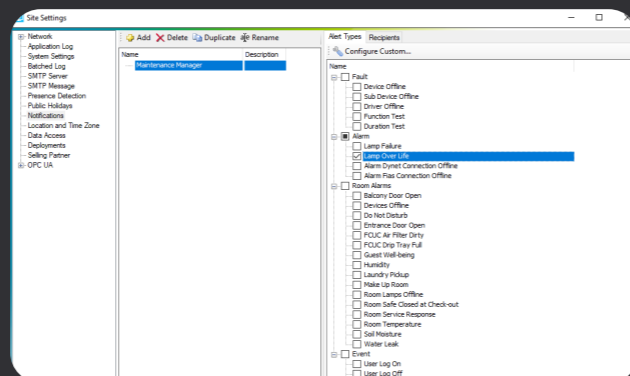
System monitoring and reporting

View system health, energy usage, scheduled events, and recent alerts on the dashboard. Users can also generate reports and/or check historical results for a specific timeframe. These reports can be customized to suit specific needs.



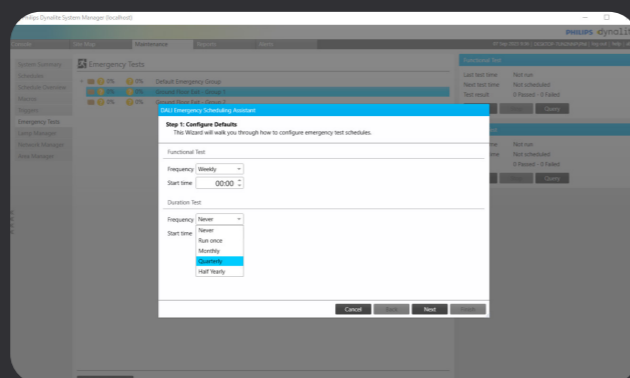
Real-time status alarms and alerts

Get notified via email when lamps and drivers fail or are close to end-of-life. Maximise uptime in mission-critical areas by scheduling proactive maintenance.



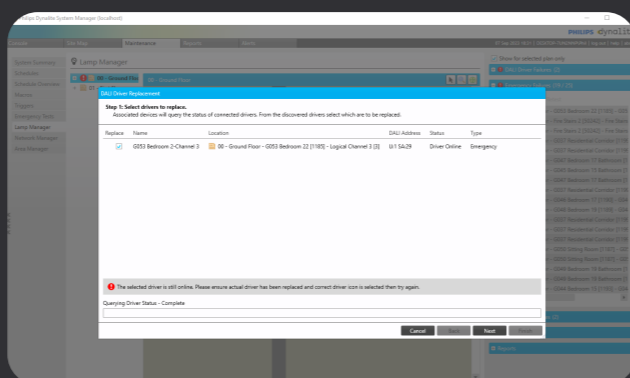
Schedule emergency tests

Each of the standard emergency lighting tests are required to be carried out at different intervals depending on local regulations. System Manager's automatic testing feature simplifies this process for the facility engineer to conduct all required tests in a timely manner.



Simple reconfiguration

When multiple DALI drivers need to be replaced at once, System Manager's replacement wizard tool identifies the drivers and configures the load controllers, ensuring a seamless transition.



End-of-life notification

System Manager tracks emergency and non-emergency lamp usage so that as a lamp approaches its end of life, the software can send a notification to facility managers, informing them of which fixtures require replacement.

Emergency lighting installation tests

System Manager's scheduled system health checks can help to meet local regulations and include the following functions:

Functional test

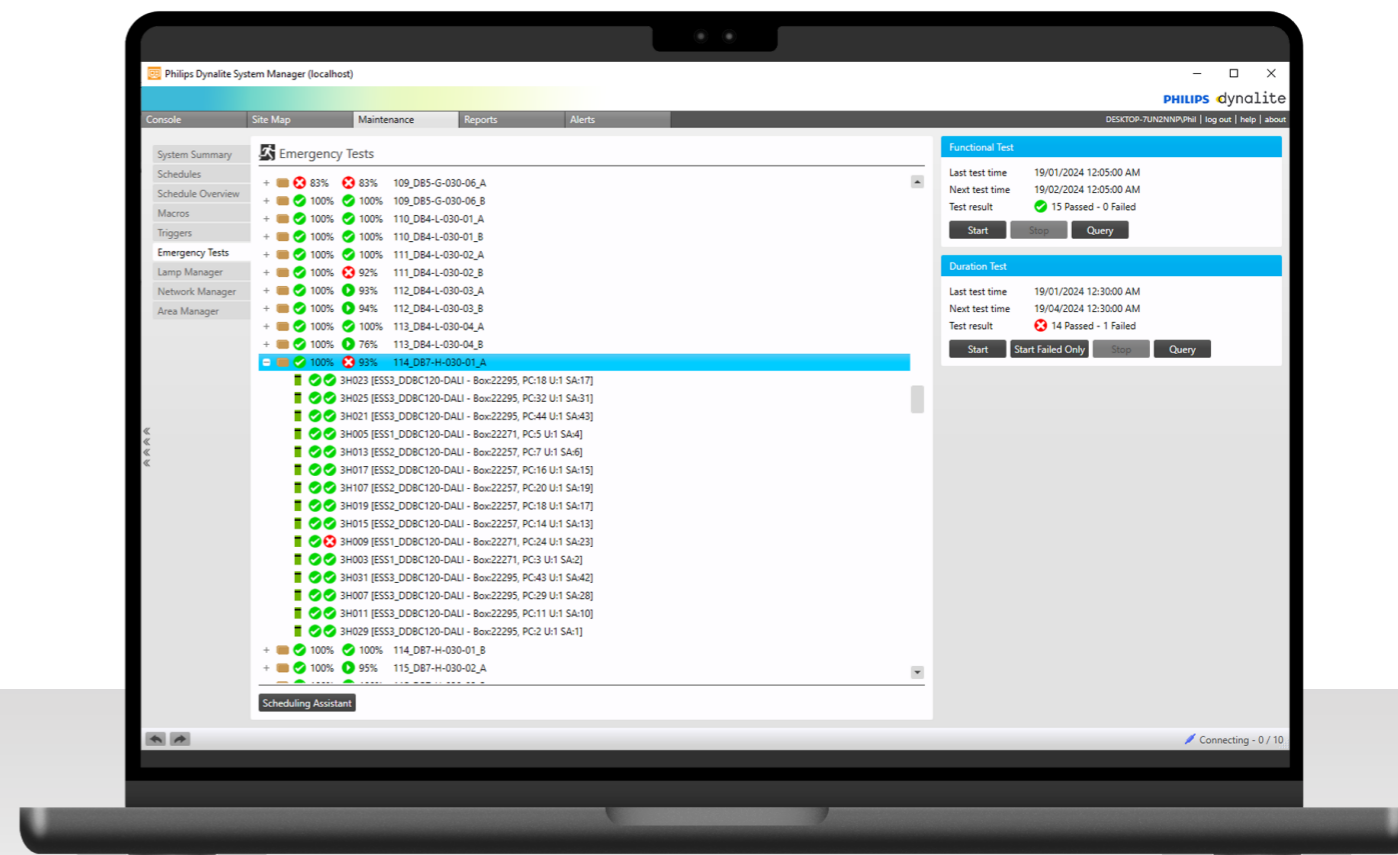
A functional test confirms the integrity of the emergency circuit, correct lamp operation, and battery emergency power supply. This test simulates a power failure to see whether the driver correctly switches to battery power. The test is passed if the emergency fixture illuminates. It is recommended to run this test at least once per month.

Duration test

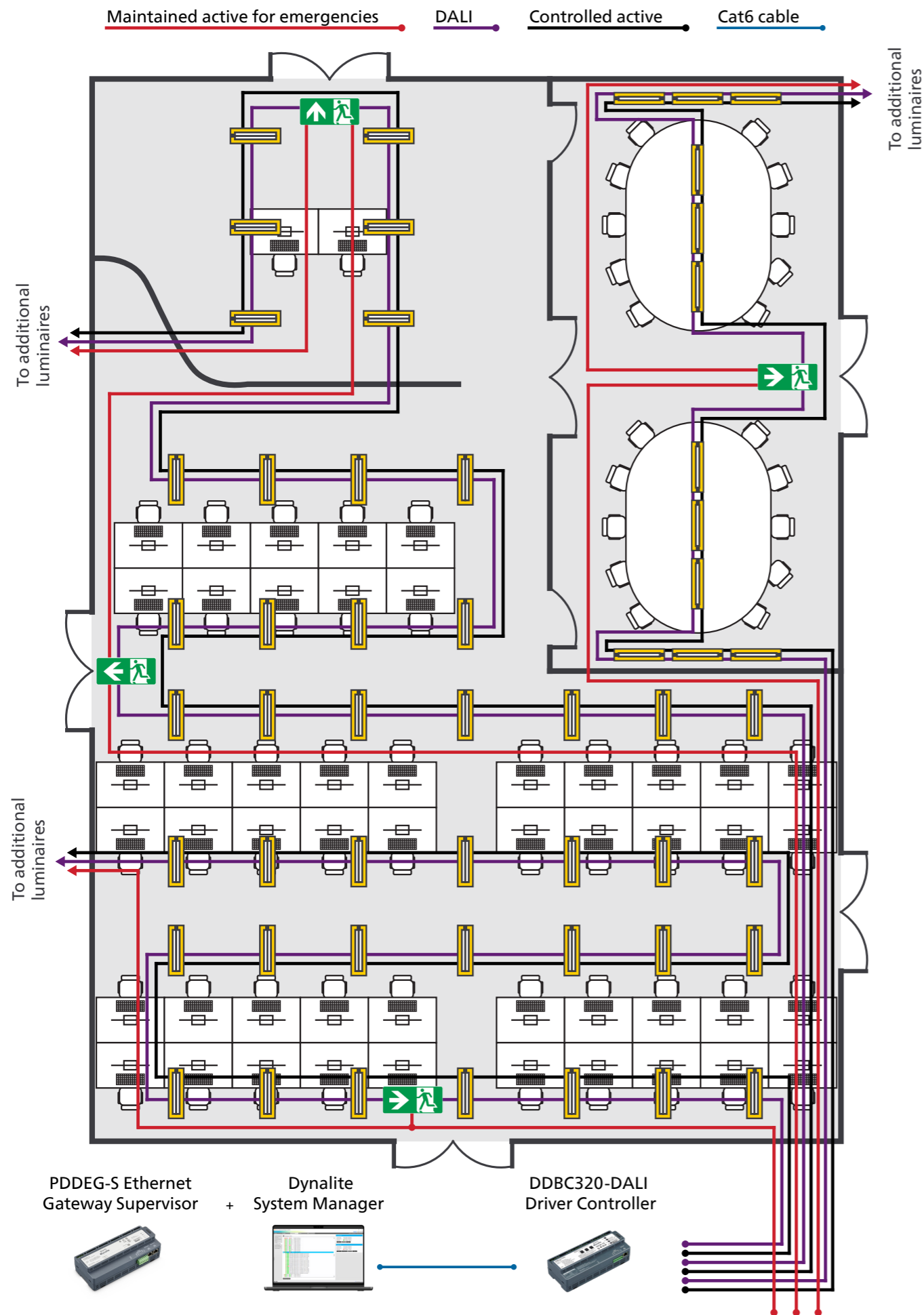
The duration test verifies whether the driver or central battery has sufficient capacity to illuminate the emergency fixtures for the rated duration. Dependant on local regulations, this is often set to a minimum of 90 minutes and is designed to enable facility engineers to check whether the emergency lighting will remain on long enough.

DALI lamp monitoring

DALI's two-way communication enables System Manager to poll all DALI luminaires, including emergency fixtures, to see whether the luminaire is currently working. This test can identify some premature lamp failures that do not fit within System Manager's predictive lamp failure feature. The system continuously monitors the online/offline status of DALI drivers and lamps and automatically alerts the facility management team if there is a failure.



Typical system architecture



DALI emergency luminaires

The Dynalite system is compatible with a wide variety of DALI emergency luminaire brands, including the Pierlite brand within Signify's portfolio.

Pierlite offers an extensive range of DALI-2 emergency and non-emergency luminaires. Design consistency upholds that the emergency fittings blend in seamlessly with the remaining installation to achieve the building's desired aesthetic.

Highlights from the Pierlite range include:



DALI Emergency Exit Signs

- Weatherlux DALI-2 Exit Light
- Blade DALI-2 Exit Light
- Stingray DALI-2 Exit Light



DALI Emergency Post Top/ Bulkheads

- Nexus DALI-2 Emergency Bulkhead Gen2
- Mine Master DALI-2 Emergency Post Top Gen2
- Alien DALI-2 Emergency Post Top Gen2



DALI Emergency Linear Luminaires

- BWP Pro DALI-2 Emergency Weatherproof
- SDW DALI-2 Emergency Weatherproof
- Vandalux DALI-2 Emergency Weatherproof



DALI Emergency Lights

- Pathfinder DALI-2 Emergency Light
- Guardian DALI-2 Emergency Floodlight

Two leading Signify brands working in harmony to deliver a complete solution:





To learn more about our control solutions
visit [dynalite.com](https://www.dynalite.com)

www.dynalite.com

© 2026 Signify Holding. All rights reserved. Specifications are subject to change without notice. No representation or warranty as to the accuracy or completeness of the information included herein is given and any liability for any action in reliance thereon is disclaimed. Dynalite and Signify Dynalite are registered trademarks of Signify Holding. All other trademarks are owned by Signify Holding or their respective owners. Data subject to change.